

2022年7月22日

研究员：许亮
投资咨询：Z0002220
审核：唐韵
投资咨询：Z0002422



上海市
虹口区
东大名路1089号26层
2601-2608单元



电话
021-55275088



电子邮件
zhouyy@dyqh.cn



网站
eafutures.com

免责声明：本报告的信息均来源于公开资料，我公司对这些信息的准确性和完整性不做任何保证，也不保证所包含的信息和建议不会发生任何变更。文中的观点、结论和建议仅供参考，报告中的信息或意见并不构成所述证券或期货的买卖出价或征价，投资者据此做出的任何投资决策与本公司和作者无关。

观点

成材库存压力减轻，供需两端预期均有一定程度修复，成本提供一定支撑。

基本面

供应：

本周铁矿澳巴19港发运量2541.40万吨，同比+9.19%，环比+7.04%。其中澳10港发运量1735.70万吨，同比+8.63%，环比+0.72%；巴9港发运量805.70万吨，同比+10.42%，环比+23.76%。全国45港到港量2829.10万吨，同比-12.42%，环比-22.69%。国内266座矿山铁精粉产量40.33万吨，同比-2.82%，环比持平。

6月铁矿进口8897万吨，累计同比-4.45%。

需求：

本周全国247家钢厂进口矿日耗266.21万吨，同比-7.89%，环比-3.11%；日均铁水产量219.24万吨，同比-6.73%，环比-3.10%。全国45港疏港量260.71万吨，同比-8.28%，环比-4.95%。

库存：

本周铁矿全国45港总库存13029.29万吨，同比+1.41%，环比+0.01%，其中贸易矿库存7757.67万吨，同比+9.75%，环比+1.60%；库存天数49.98天，同比+10.57%，环比+5.22%。全国247家钢厂进口矿库存10111.91万吨，同比-12.08%，环比+0.01%；库存天数37.61天，同比-5.50%，环比+2.20%。

价格：

本周62%普指100.35美元/吨，同比-50.30%，环比+3.88%。港口现货最低交割品折盘面728.87元/吨，同比-39.79%，环比-4.95%。主力合约基差47.9元/吨。

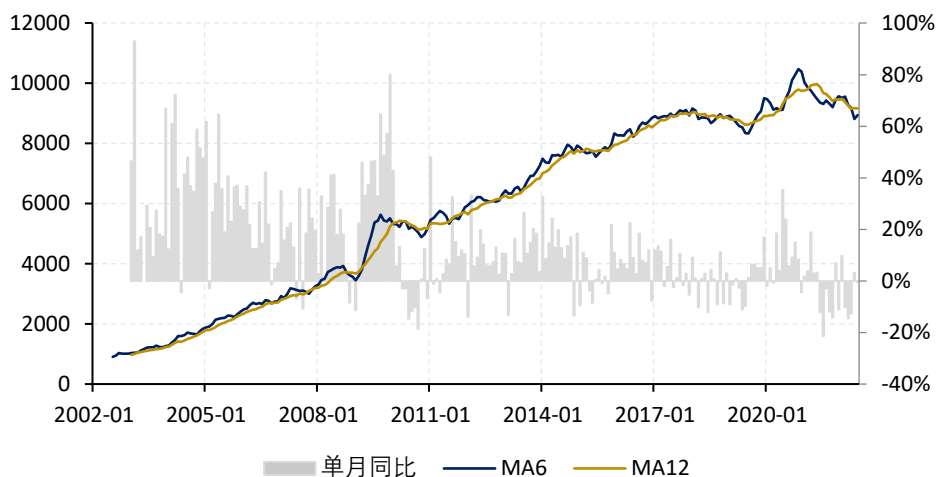
目录

一、 基本面	3
1. 供应	3
2. 需求	8
3. 库存	14
二、 价格与价差	22
1. 价格	22
2. 利润	26

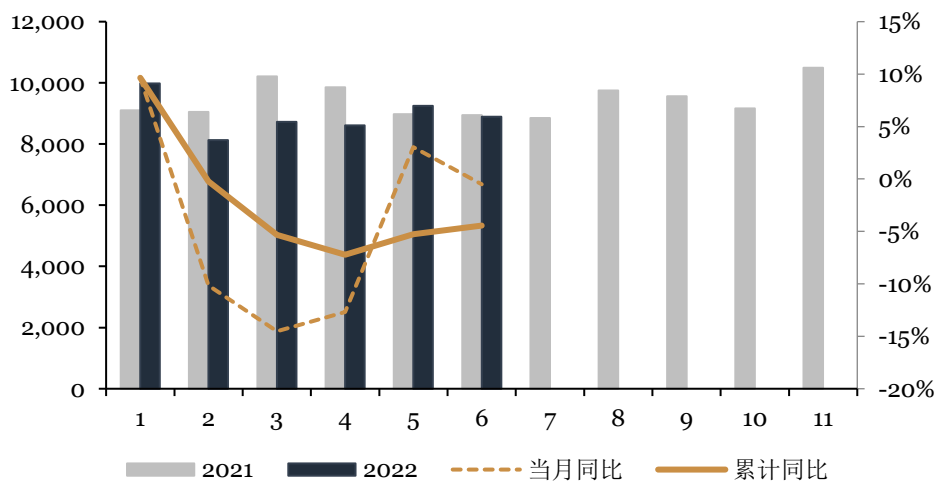
一、 基本面

1. 供应

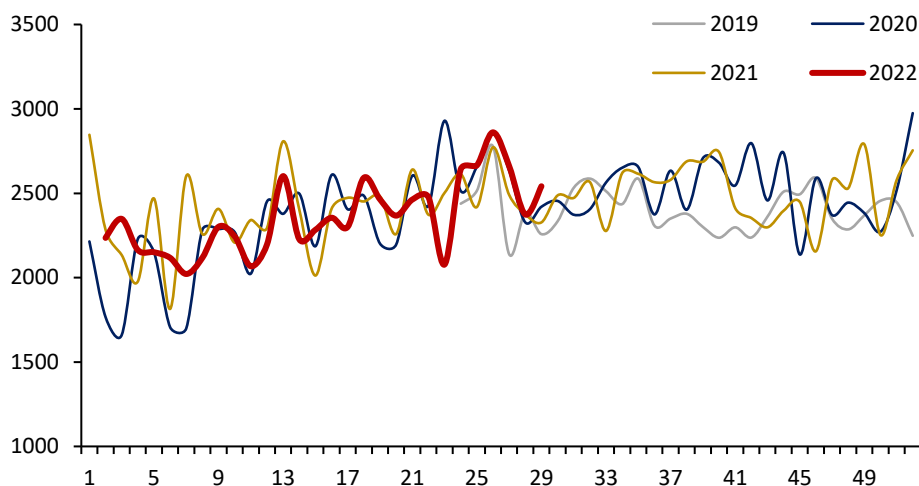
铁矿进口量 (万吨)



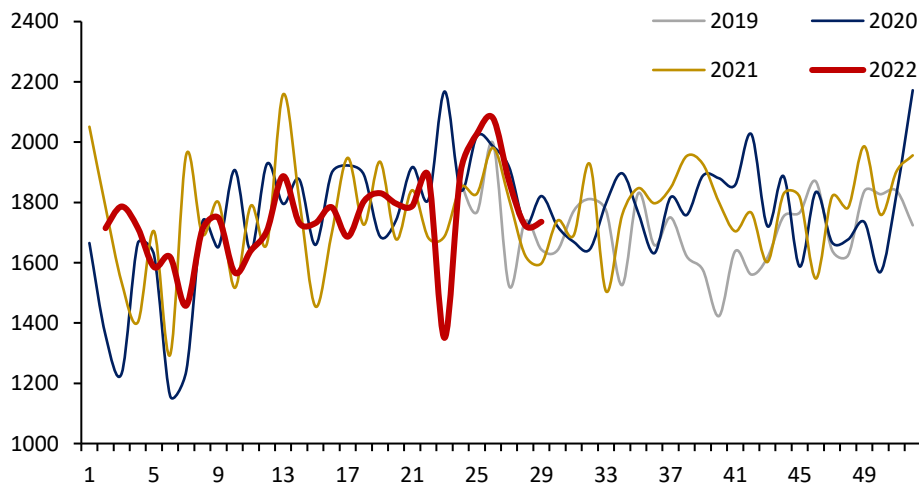
铁矿进口量 (万吨)



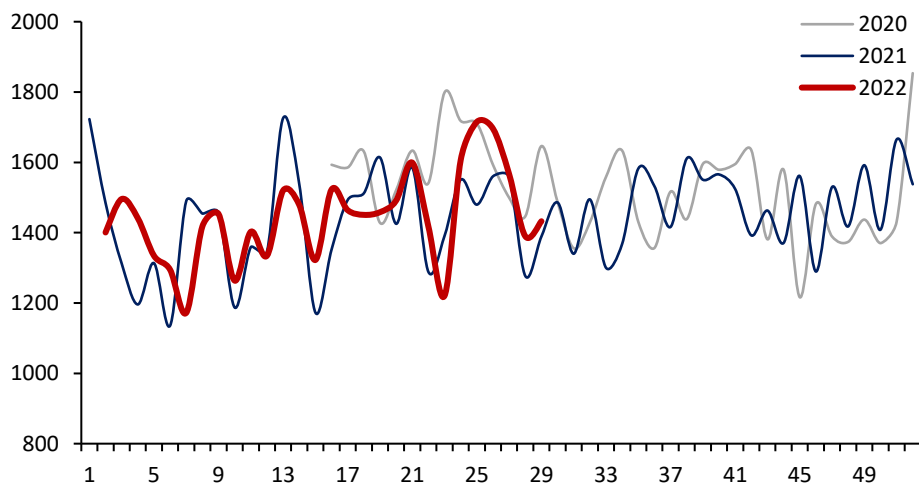
铁矿发运量：澳巴 19 港（万吨）



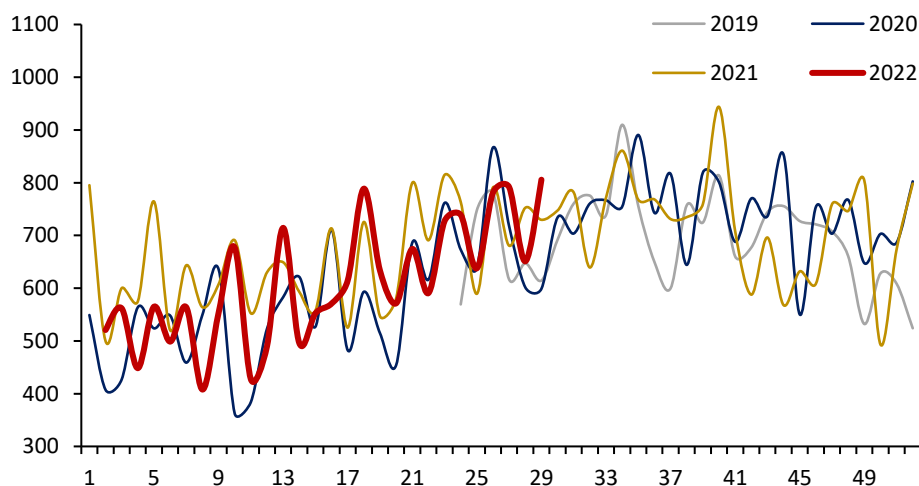
铁矿发运量：澳 10 港（万吨）



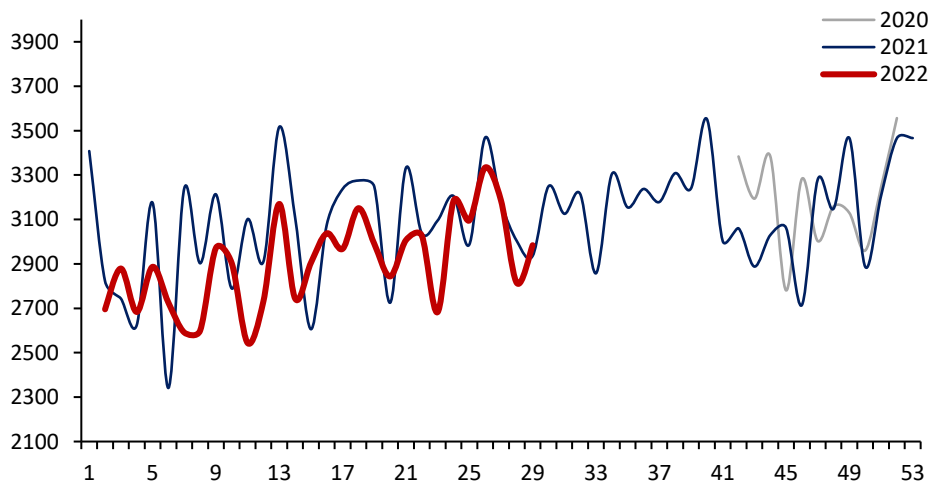
铁矿发运量：澳 10 港：至中国（万吨）



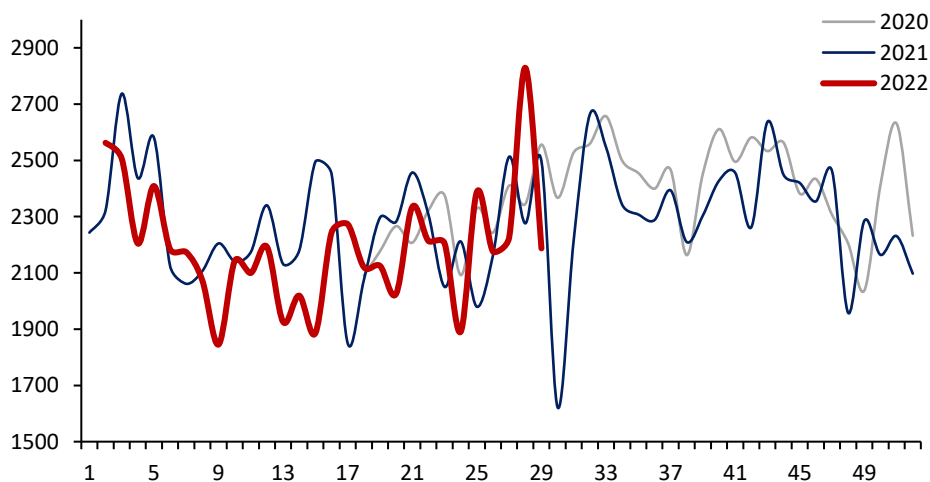
铁矿发运量：巴9港（万吨）



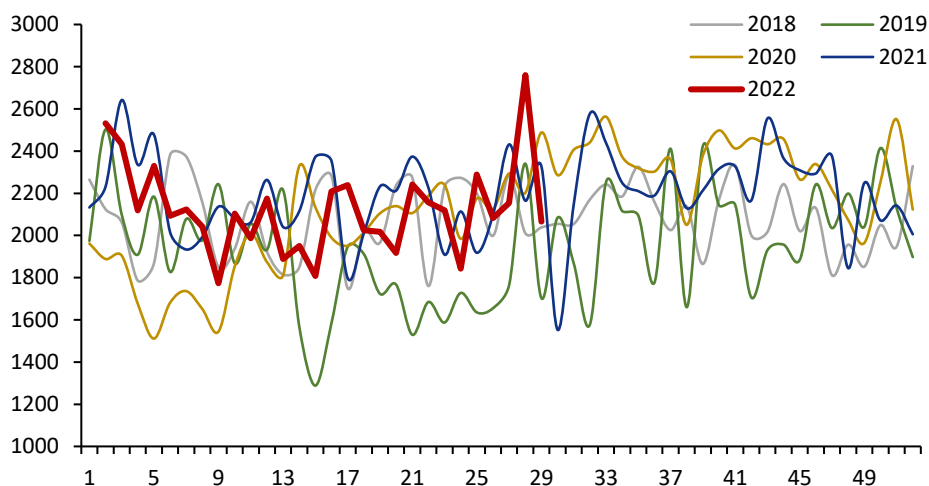
铁矿发货量：全球（万吨）



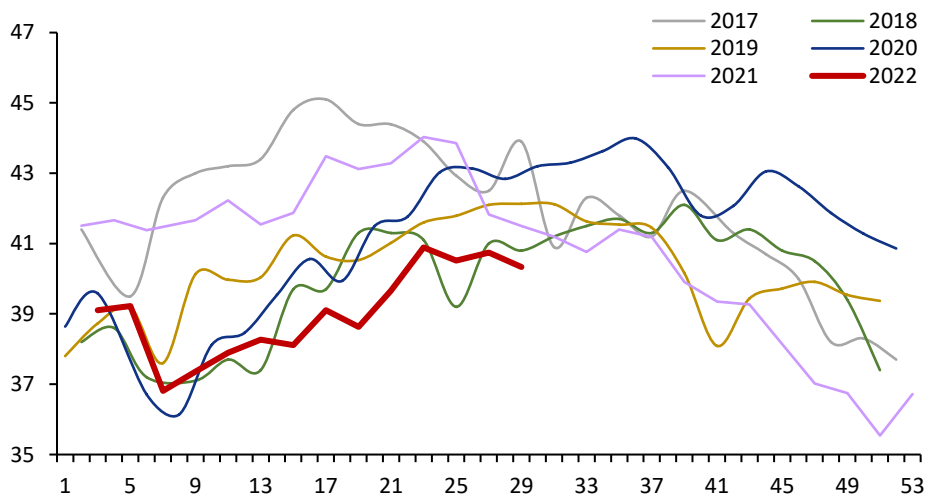
铁矿到港量：45港（万吨）



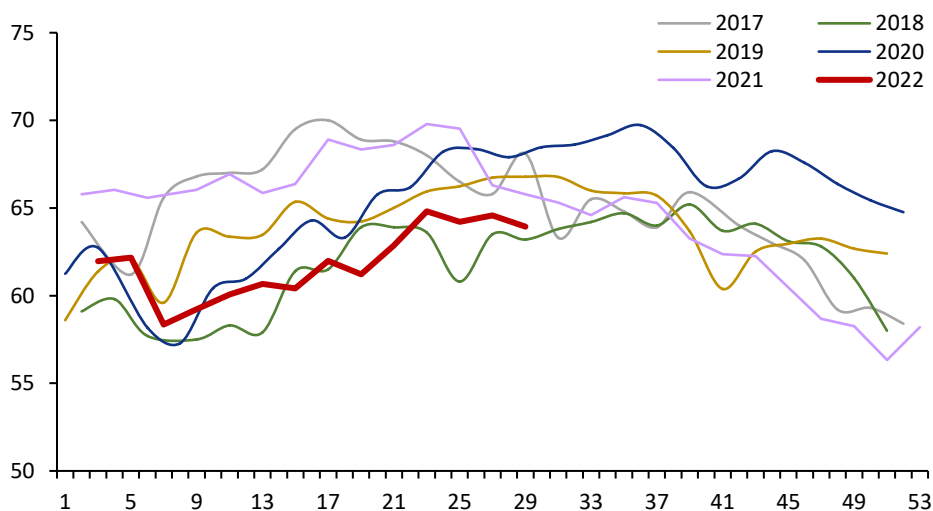
铁矿到港量：26 港（万吨）

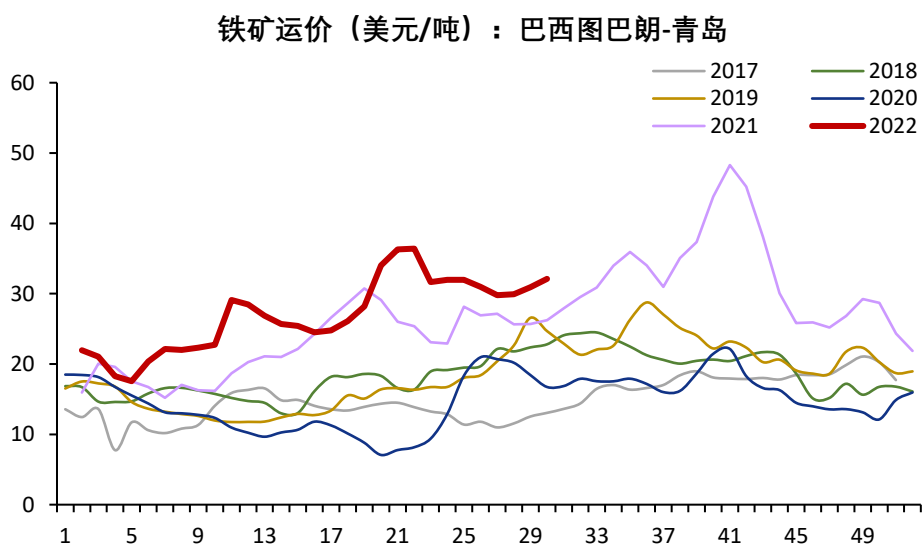
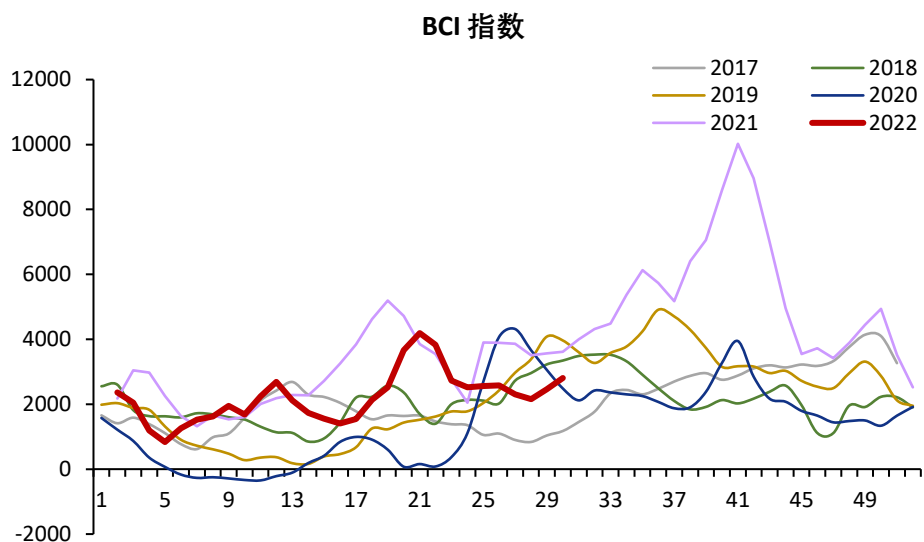
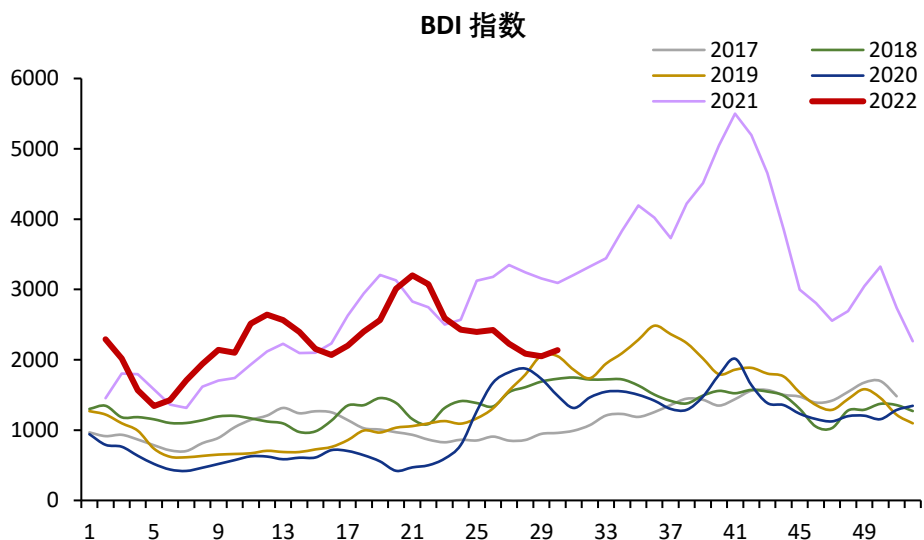


全国 266 座矿山产量（万吨）

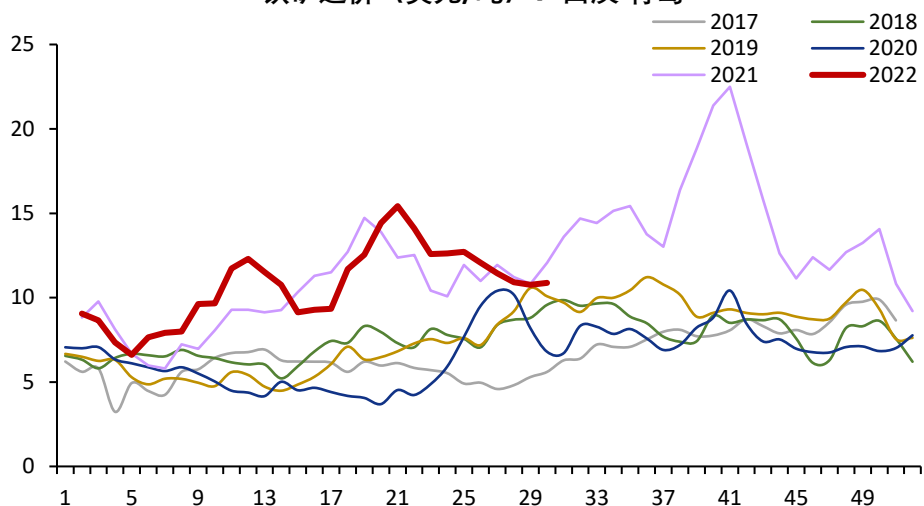


全国266座矿山产能利用率 (%)



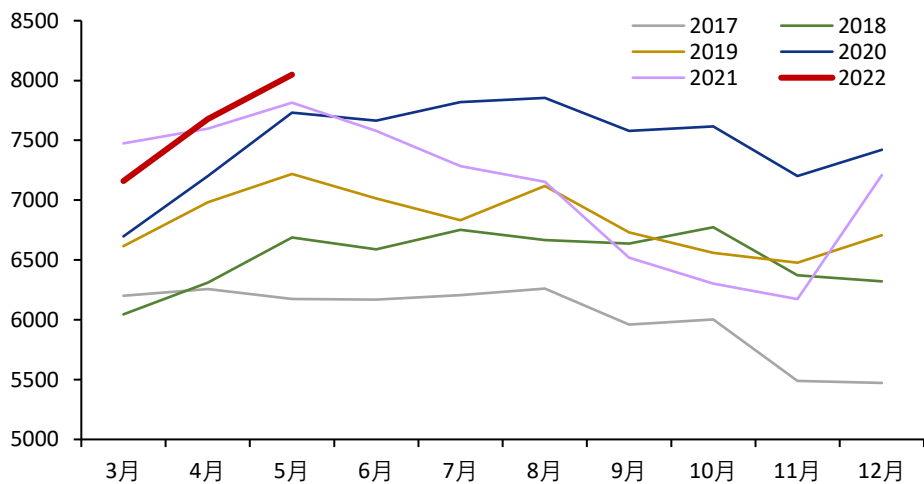


铁矿运价 (美元/吨) : 西澳-青岛

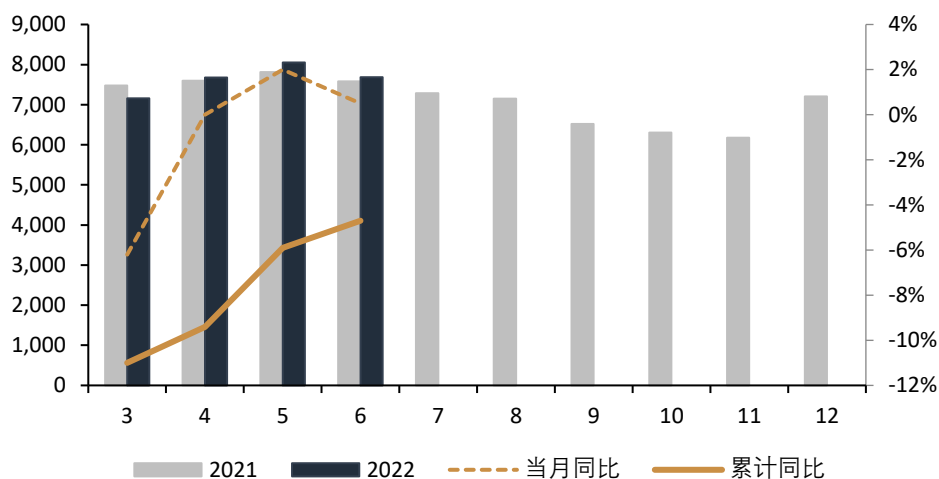


2. 需求

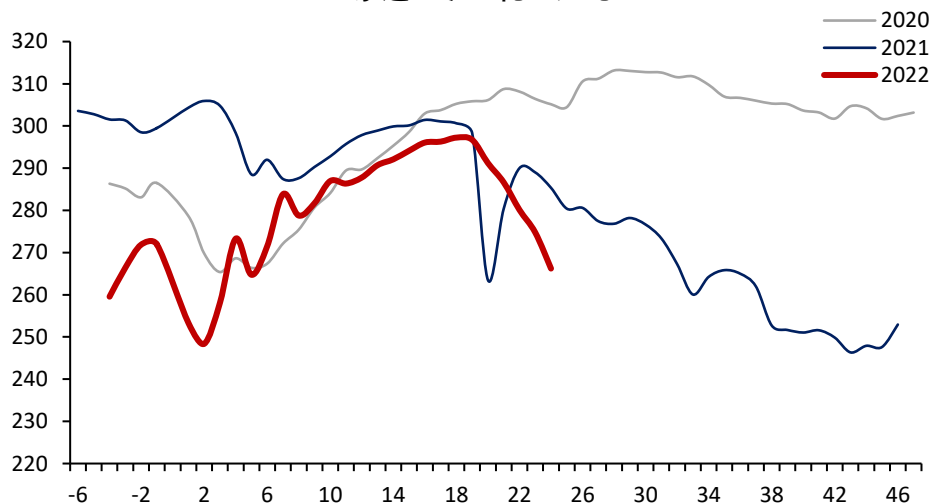
生铁月度产量 (万吨)



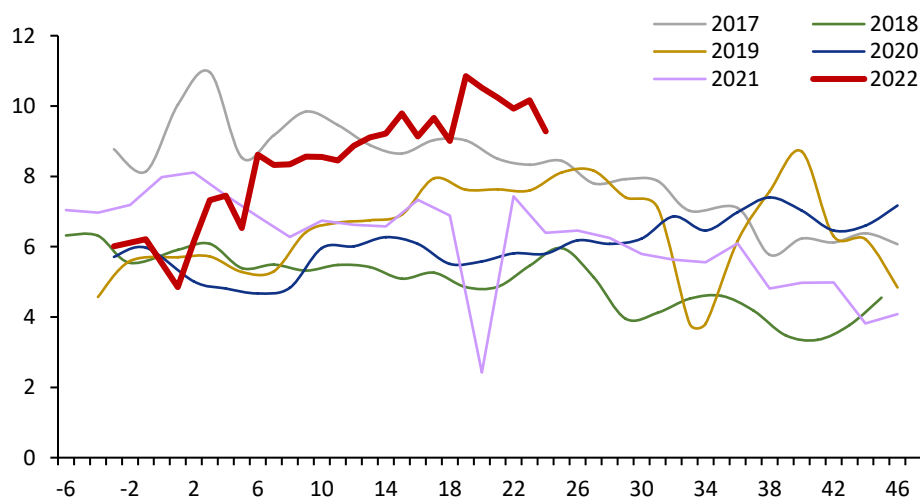
统计局全国生铁产量 (万吨)



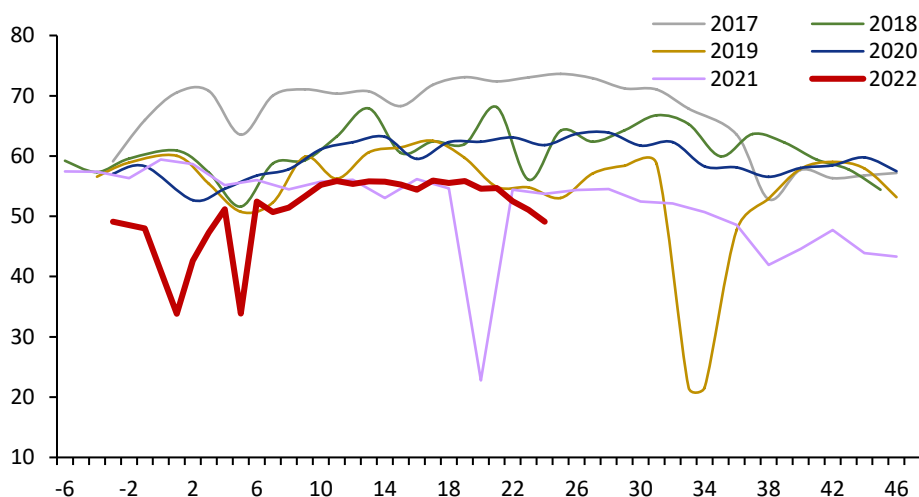
247家进口矿日耗 (万吨)



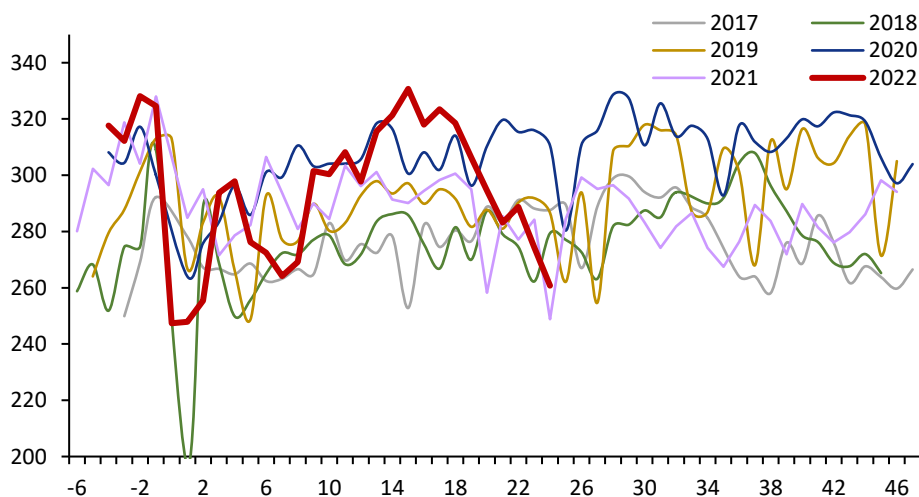
64家钢厂国产粉矿日耗 (万吨)



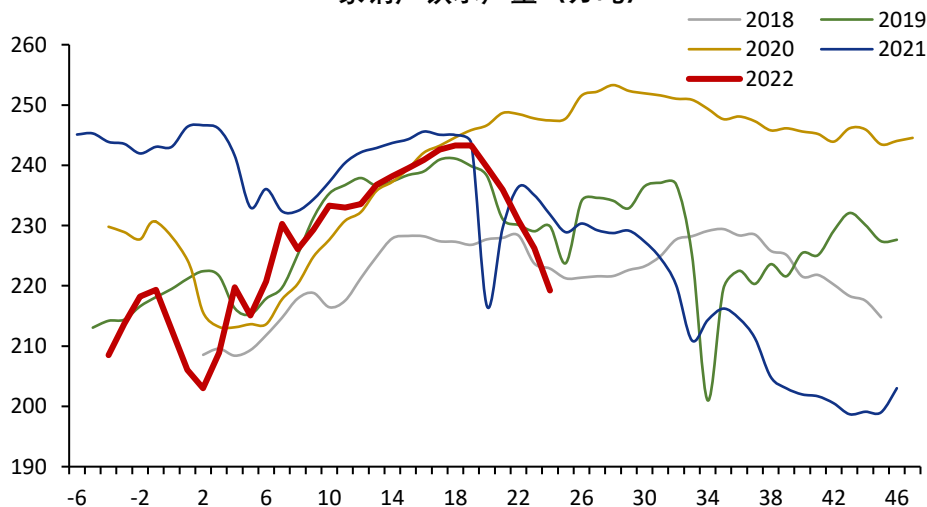
64家钢厂进口粉矿日耗 (万吨)



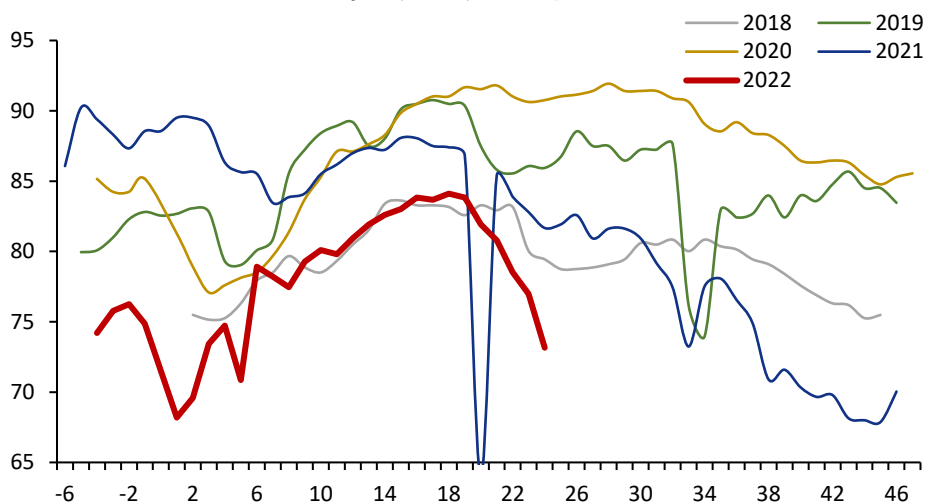
45港口疏港量 (万吨)



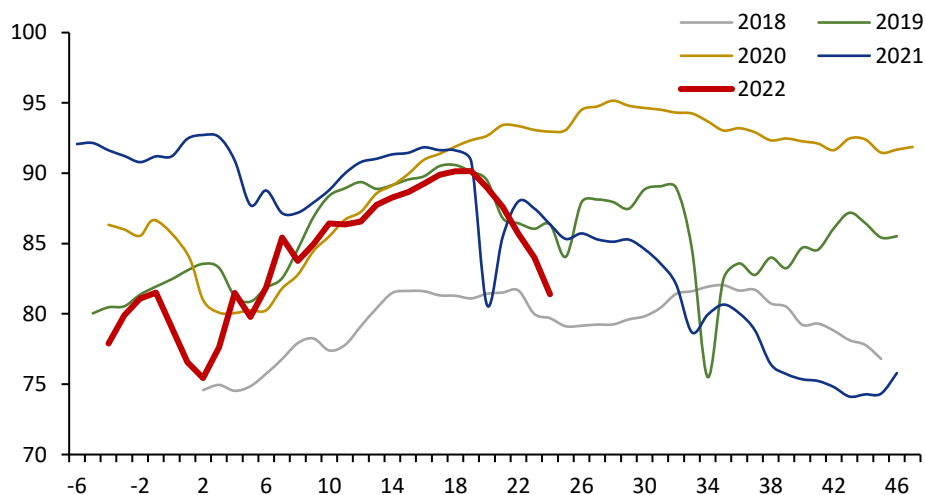
247家钢厂铁水产量 (万吨)



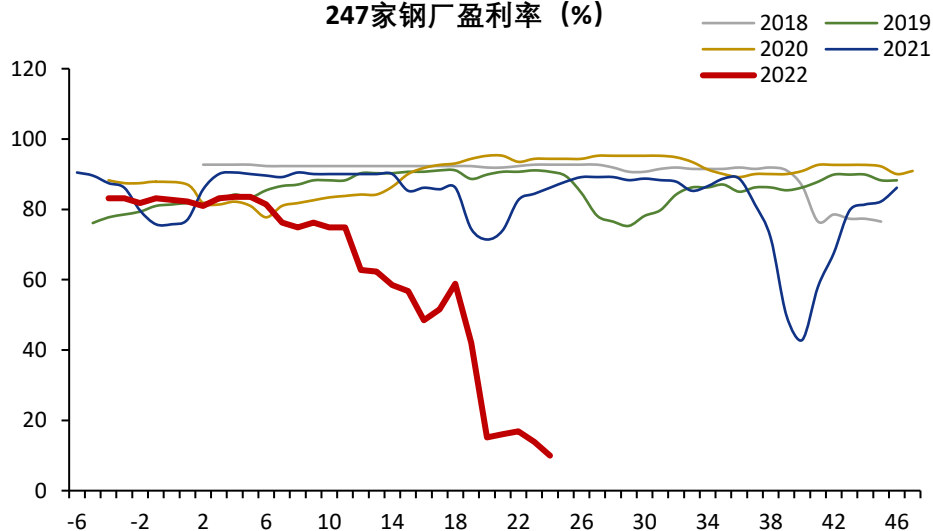
247家钢厂高炉开工率 (%)



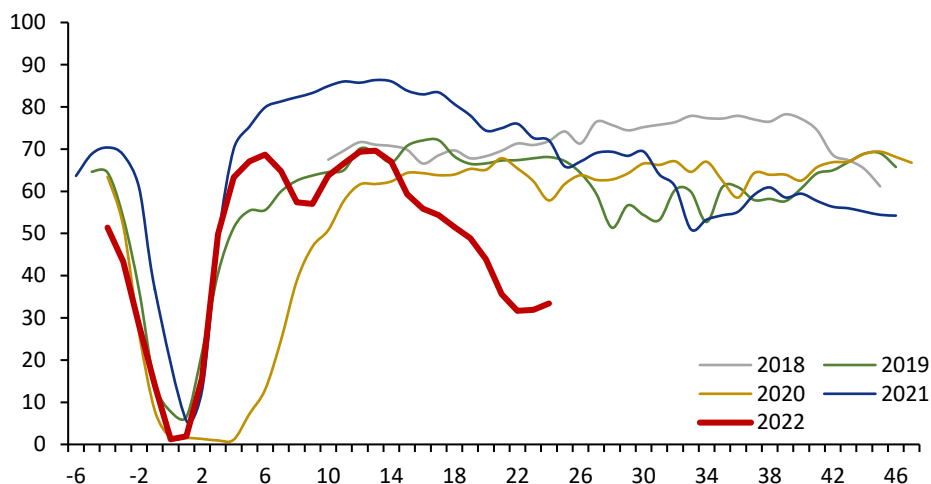
247家高炉产能利用率 (%)



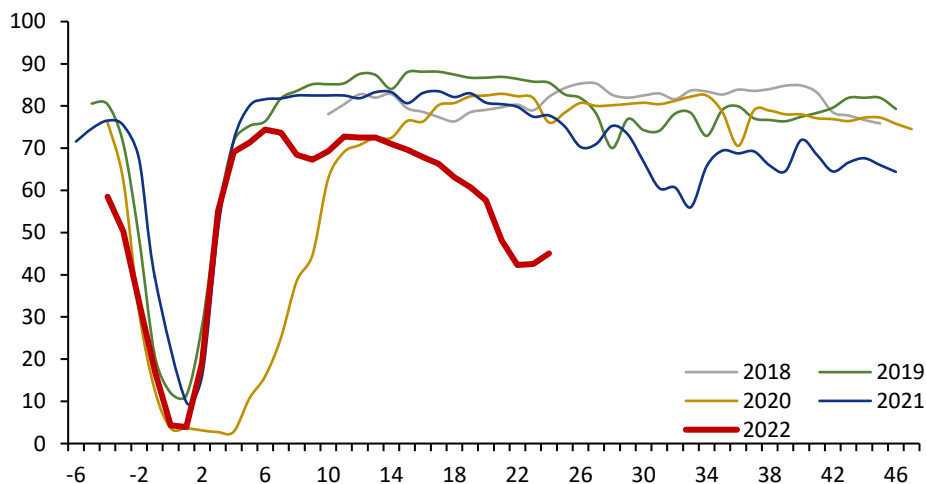
247家钢厂盈利率 (%)



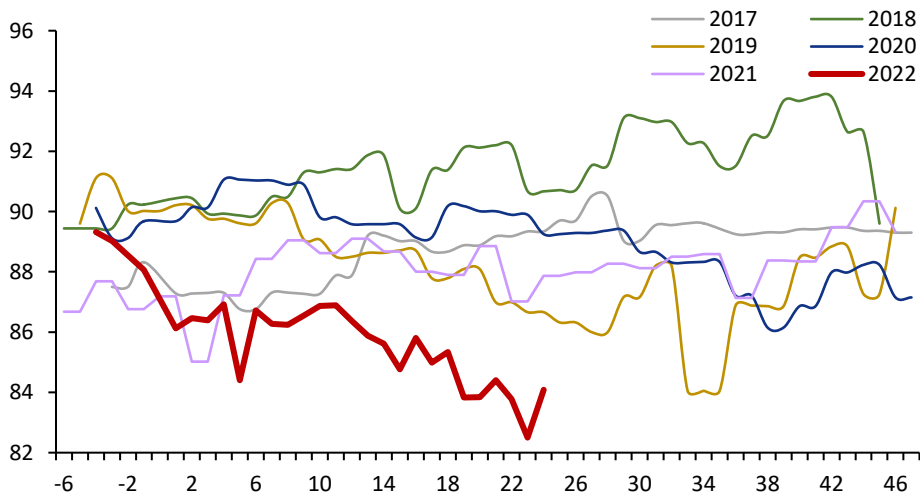
电炉产能利用率 (%) : 农历对齐



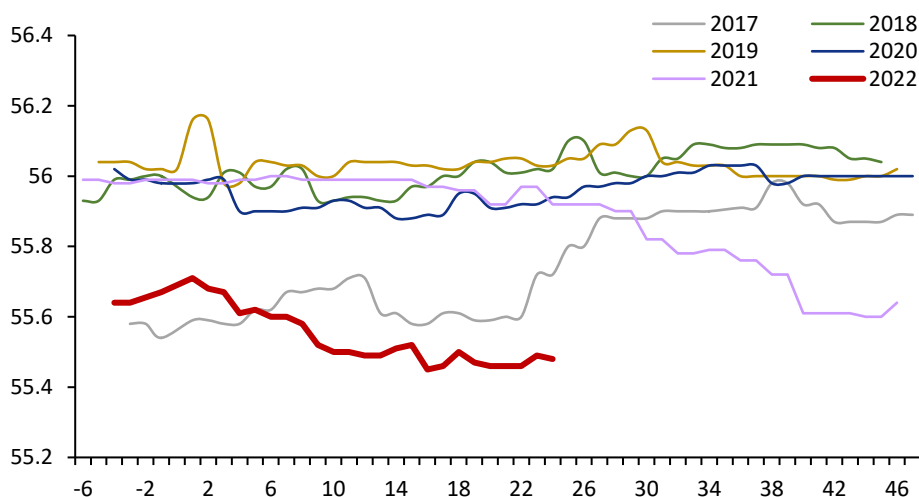
电弧炉开工率 (%) : 农历对齐



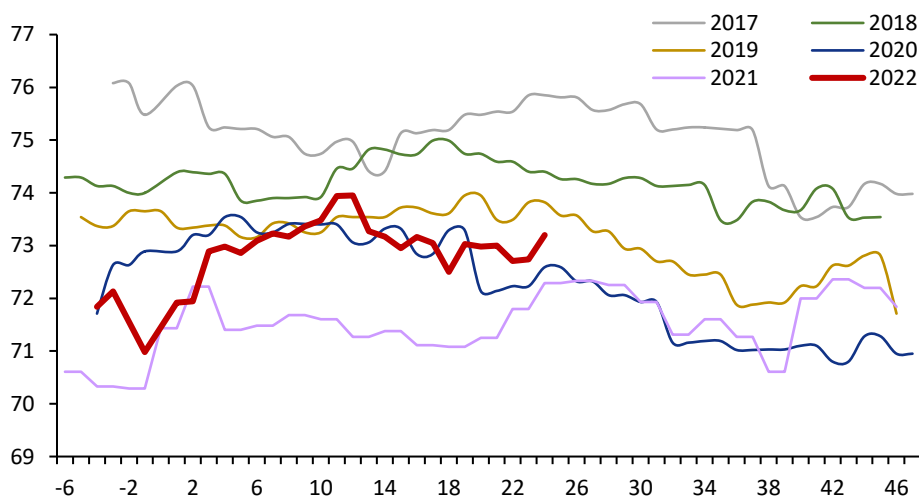
64家钢厂进口矿烧结配比 (%)



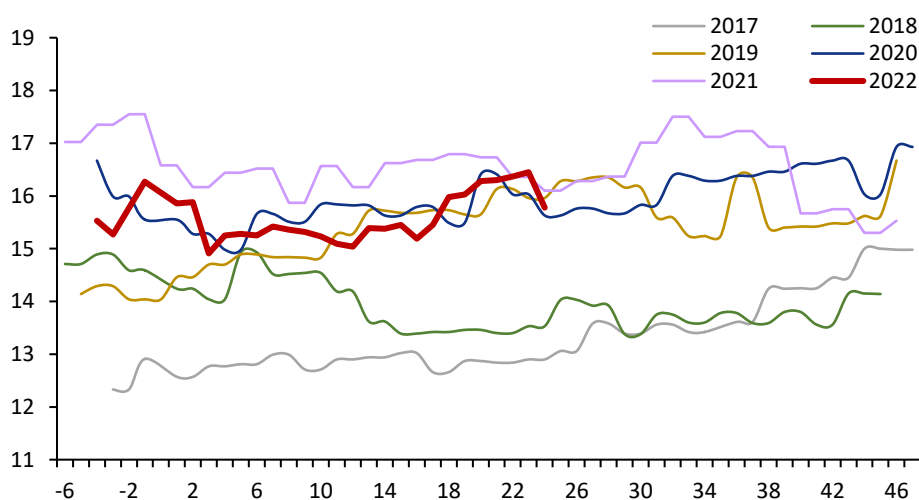
64家钢厂烧结矿入炉品位 (%)



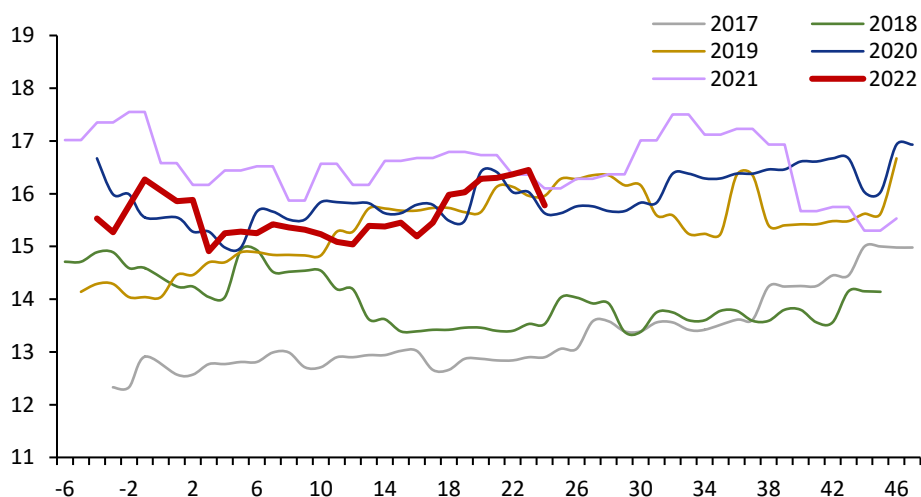
64家钢厂烧结矿入炉配比 (%)



64家钢厂块矿入炉比 (%)

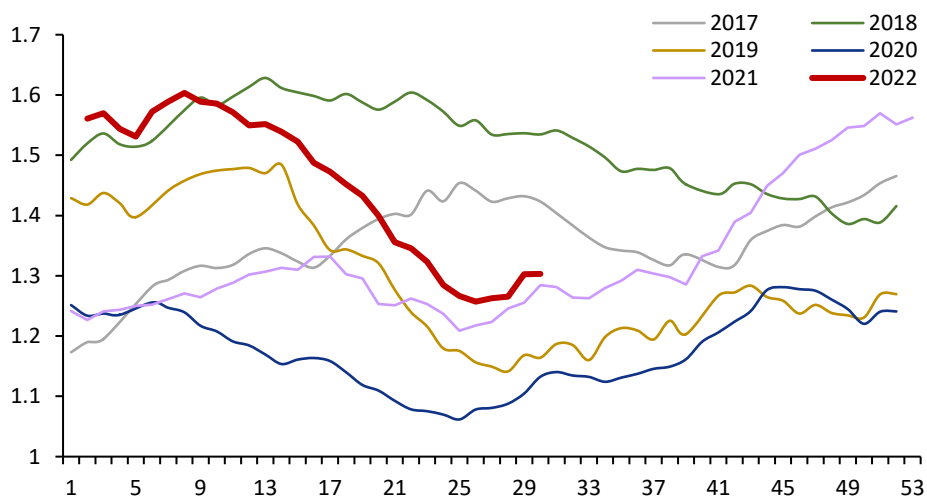


64家钢厂球团矿入炉配比 (%)

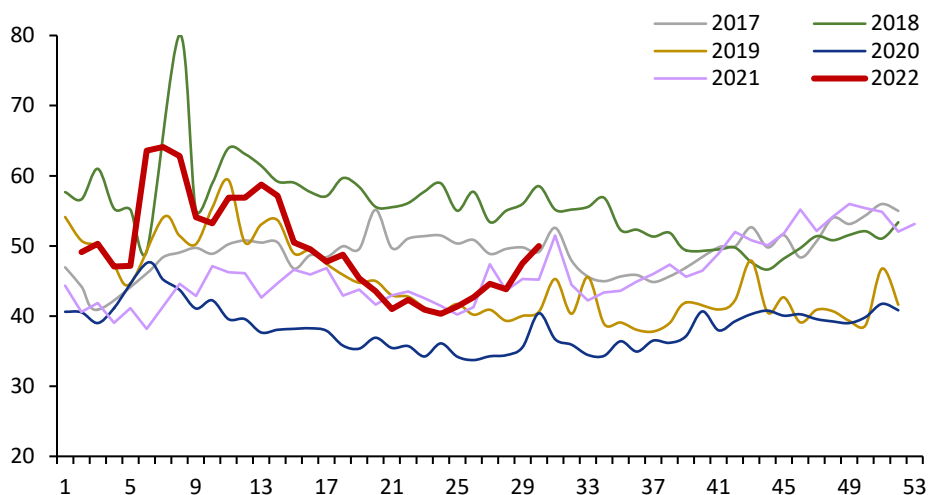


3. 库存

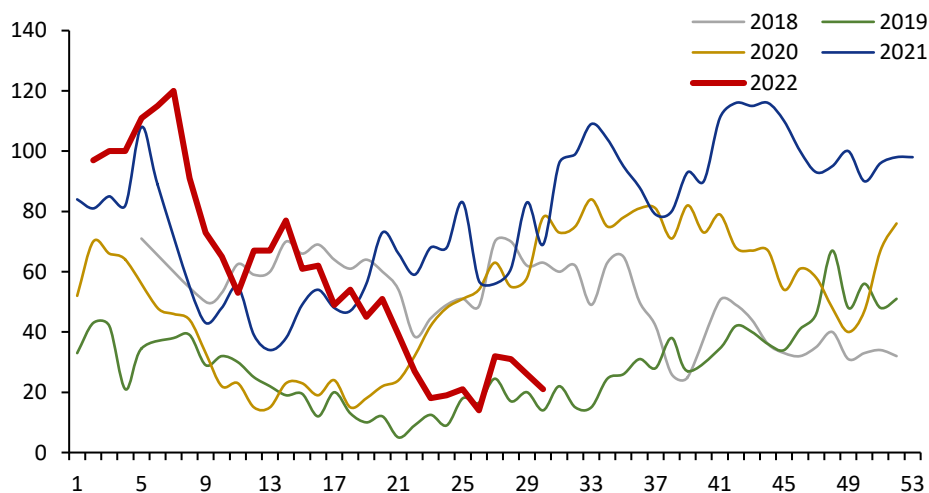
全国45港口铁矿总库存 (亿吨)



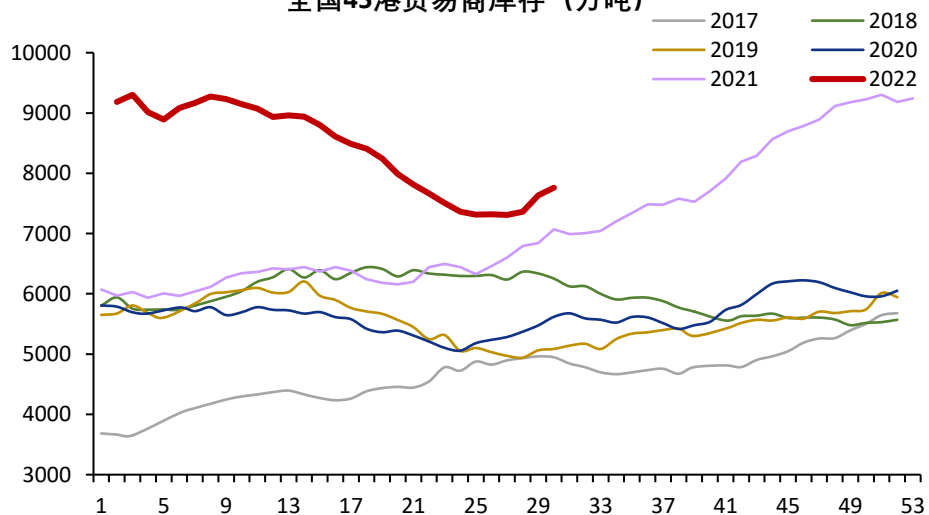
全国45港铁矿库存天数



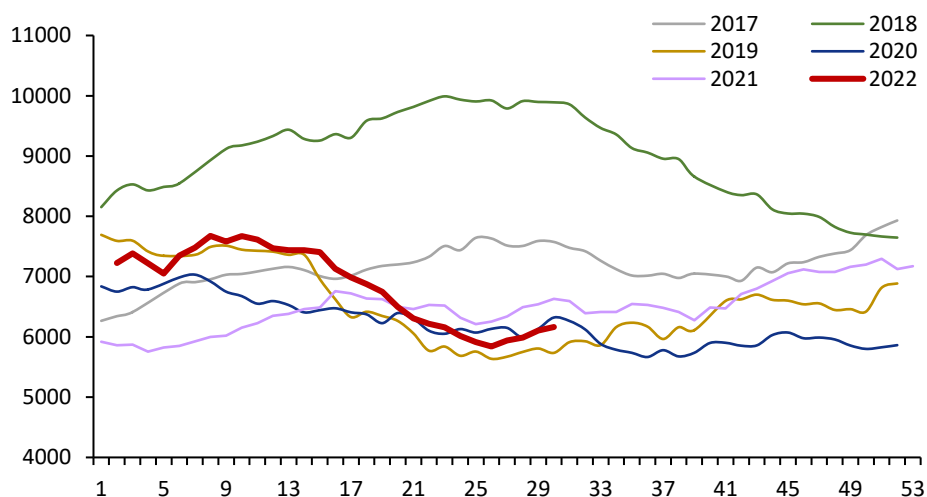
全国45港铁矿压港天数



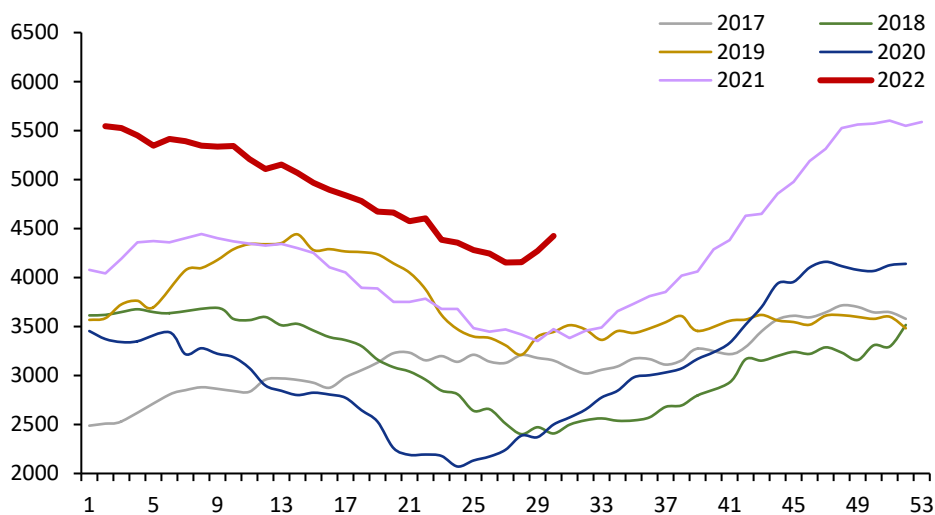
全国45港贸易商库存 (万吨)



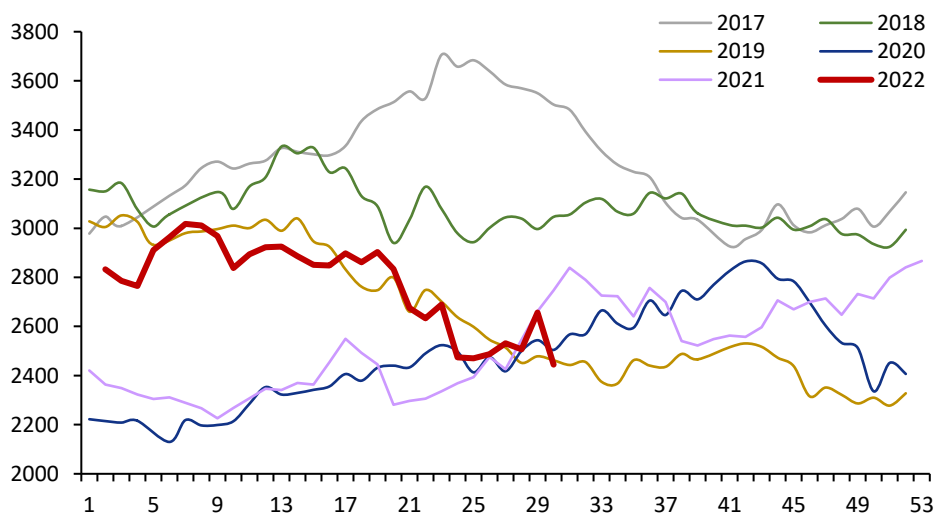
全国45港澳洲矿库存 (万吨)



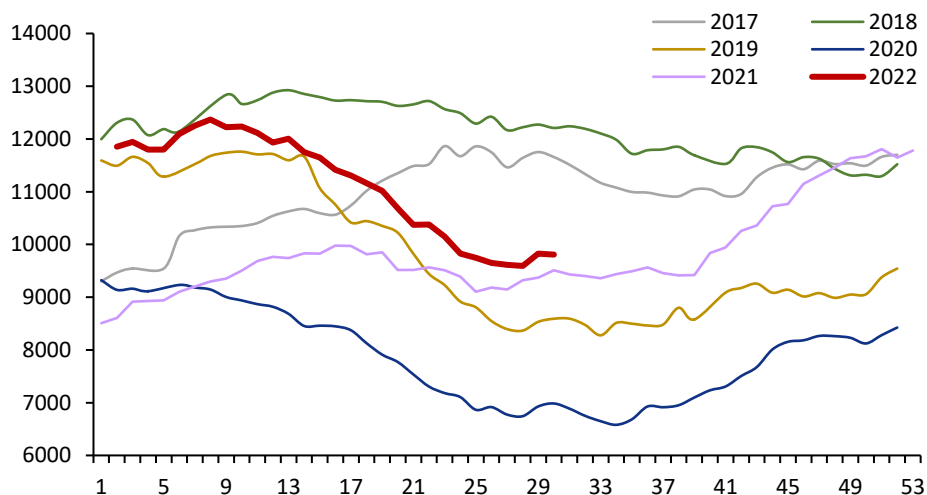
全国45港巴西矿库存 (万吨)



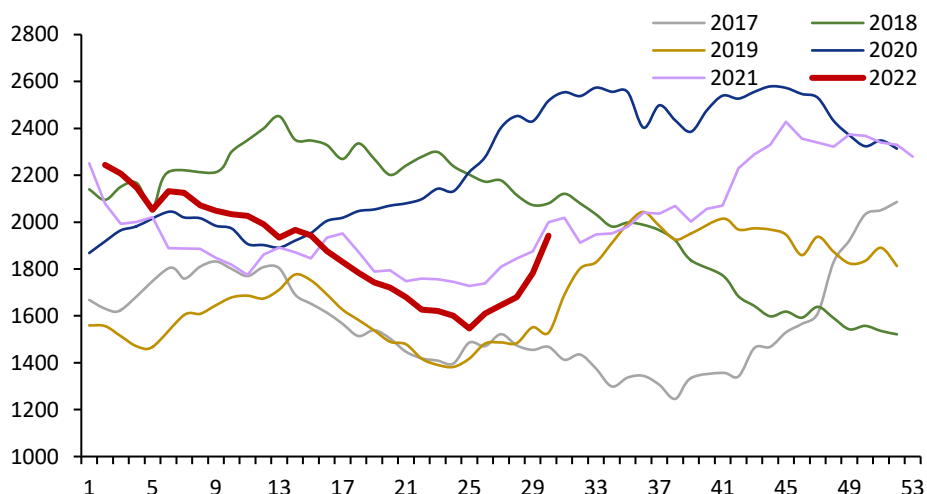
全国45港非澳巴矿库存 (万吨)



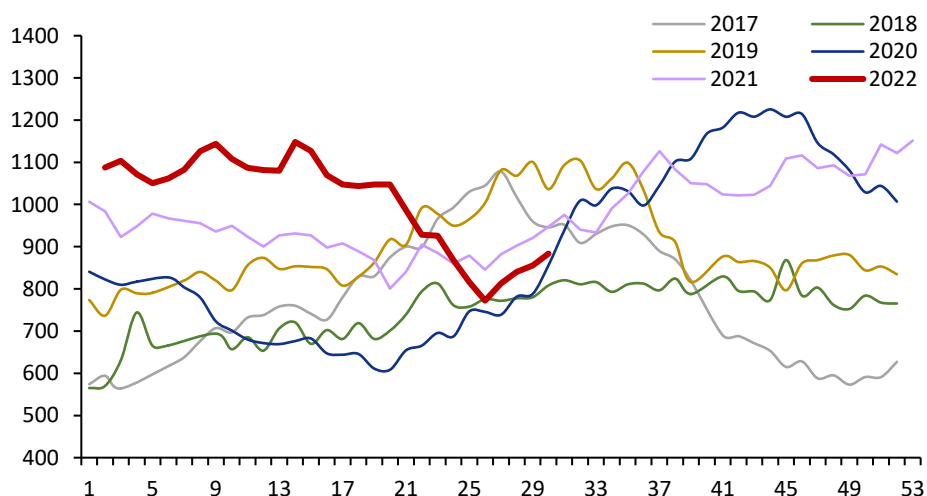
全国45港粗粉库存 (万吨)



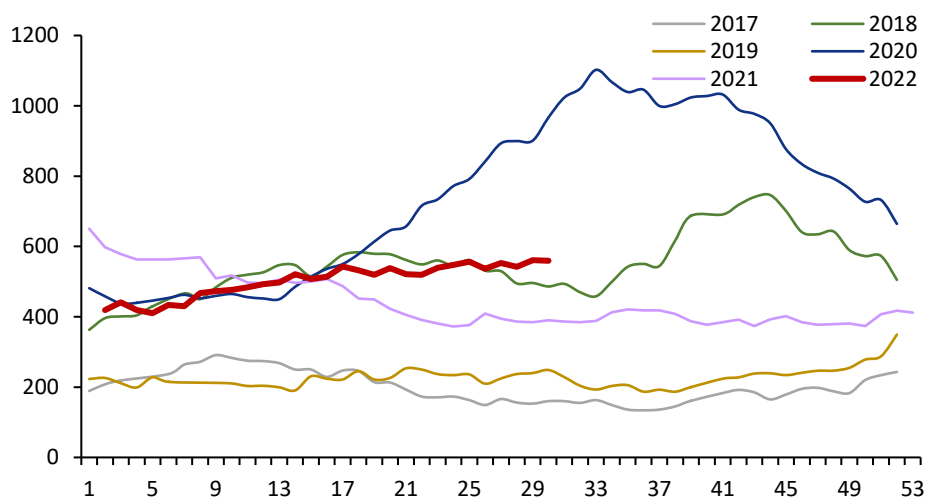
全国45港块矿库存 (万吨)



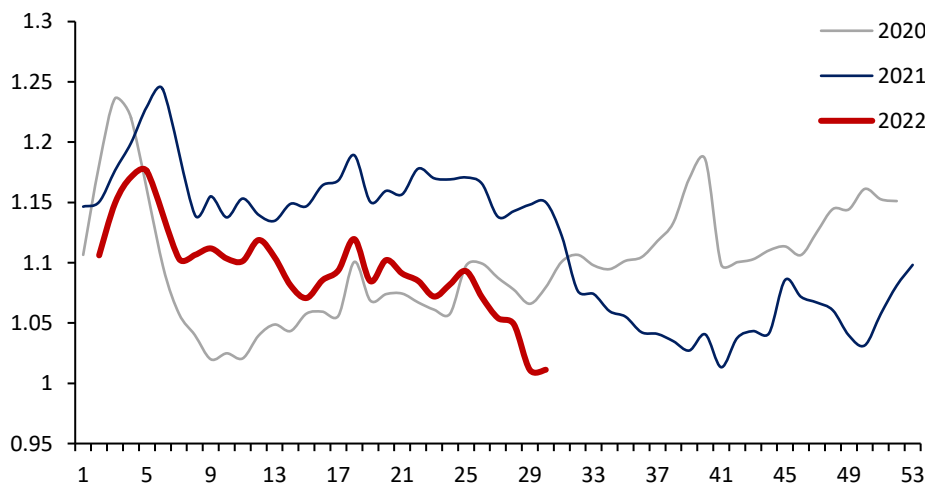
全国45港铁精粉库存 (万吨)



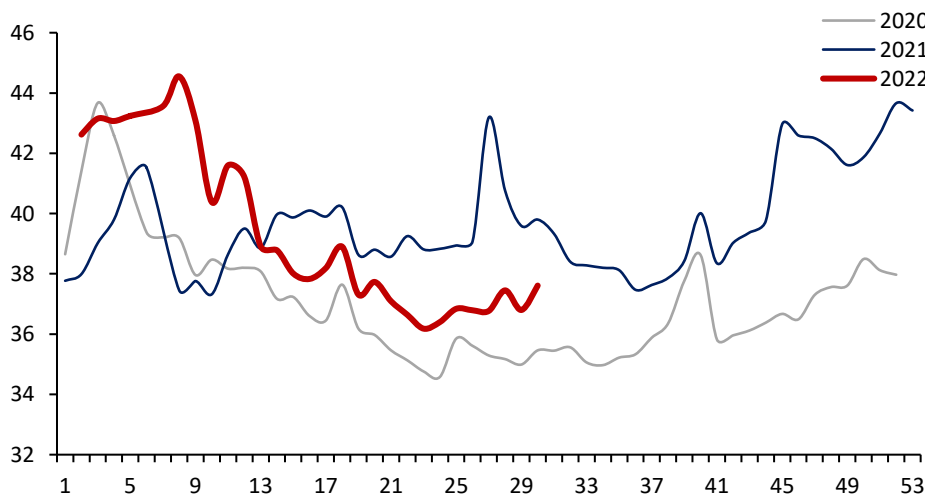
全国45港球团矿库存 (万吨)



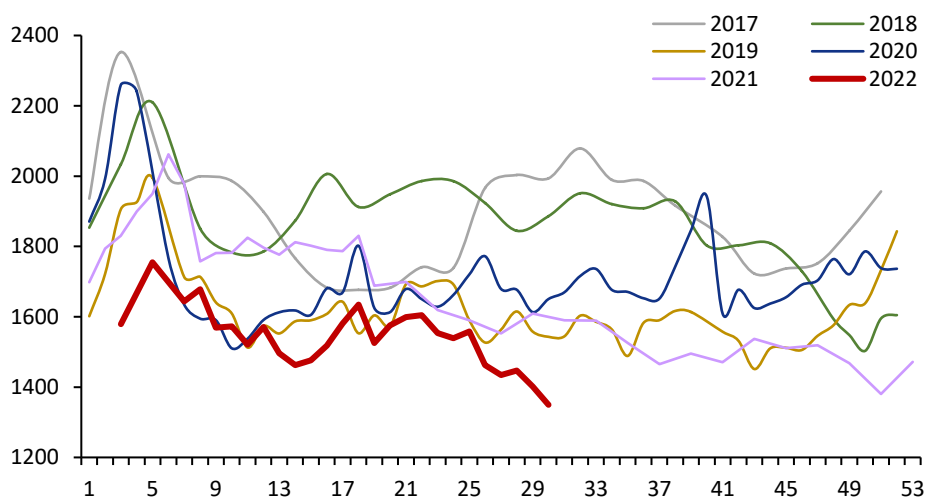
247家钢厂进口矿总库存 (亿吨)



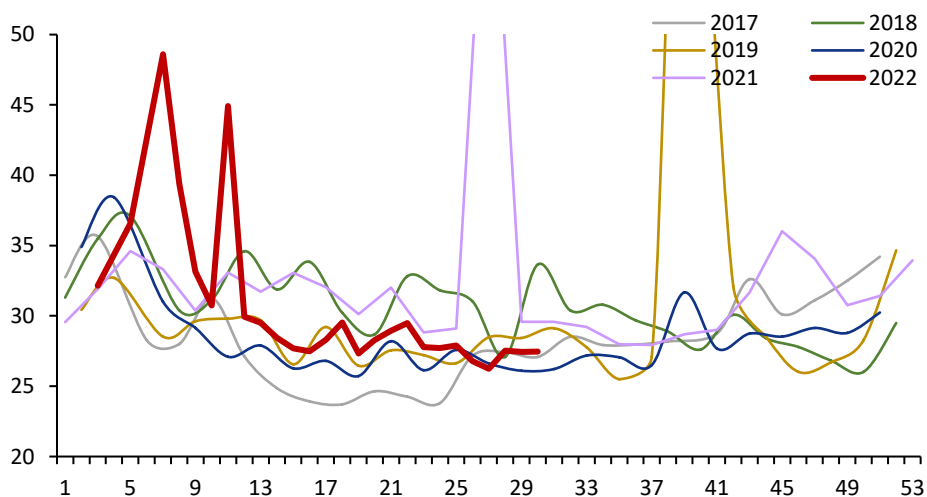
247家钢厂进口矿库消比 (天)



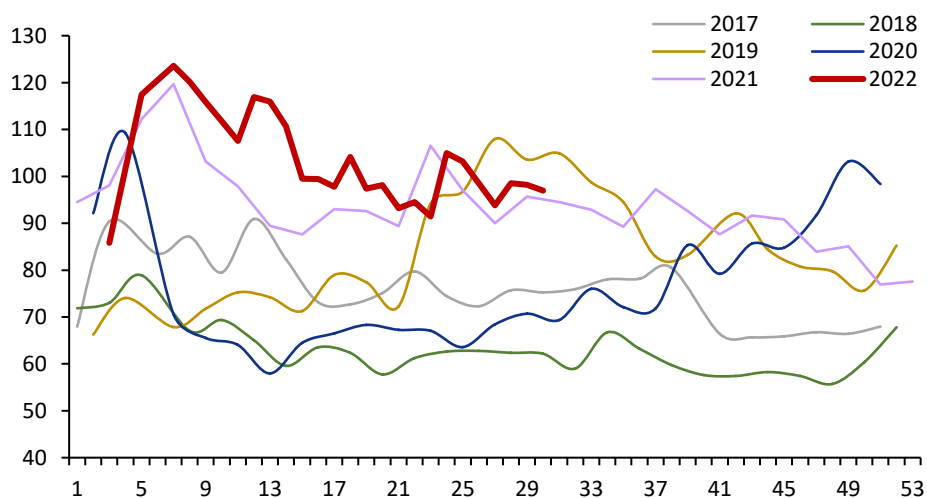
64家钢厂进口粉矿库存 (万吨)



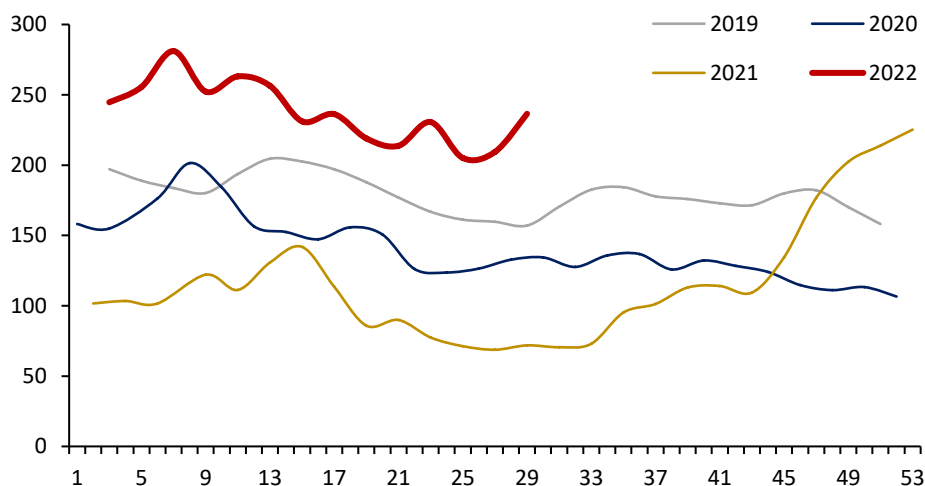
64家钢厂进口粉矿库销比



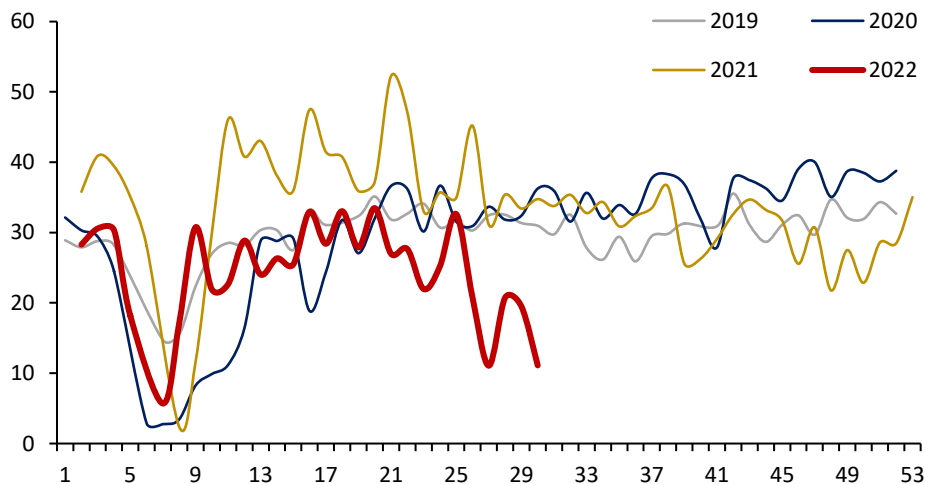
64家钢厂国产粉矿库存 (万吨)



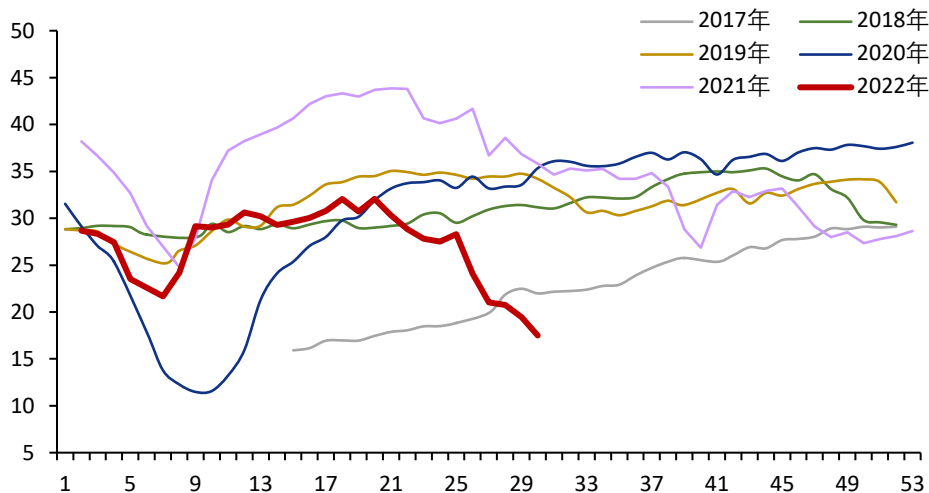
全国266座矿山铁精矿库存 (万吨)



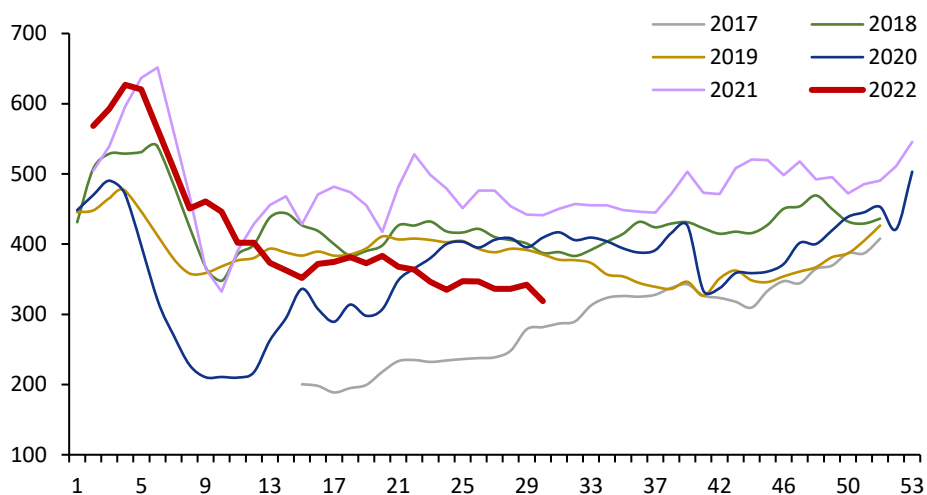
富宝147家钢厂废钢到货 (万吨)



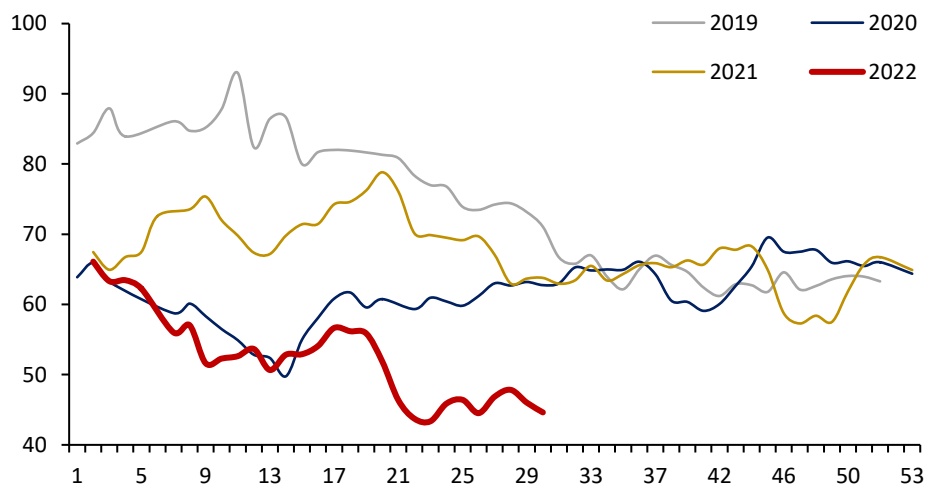
全国147家废钢日耗 (万吨)



富宝147家钢厂废钢库存 (百万吨)

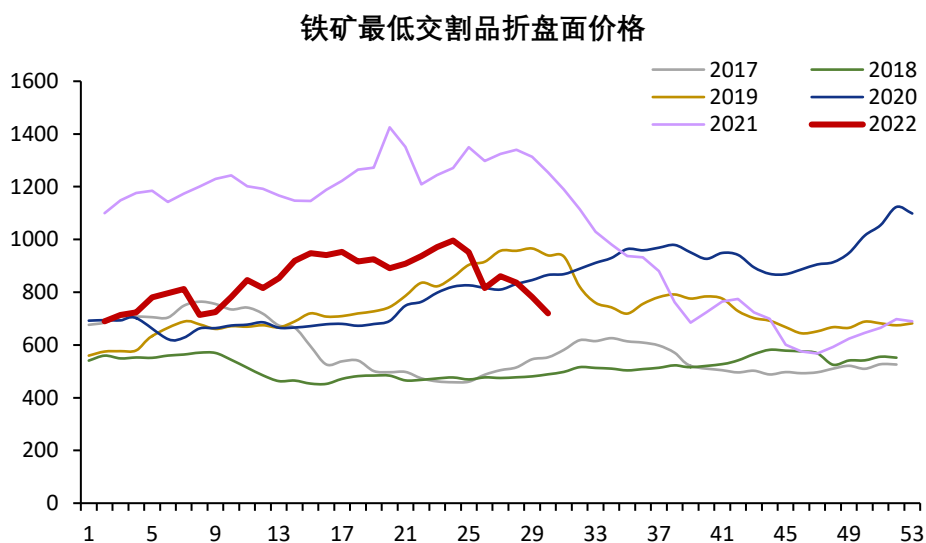
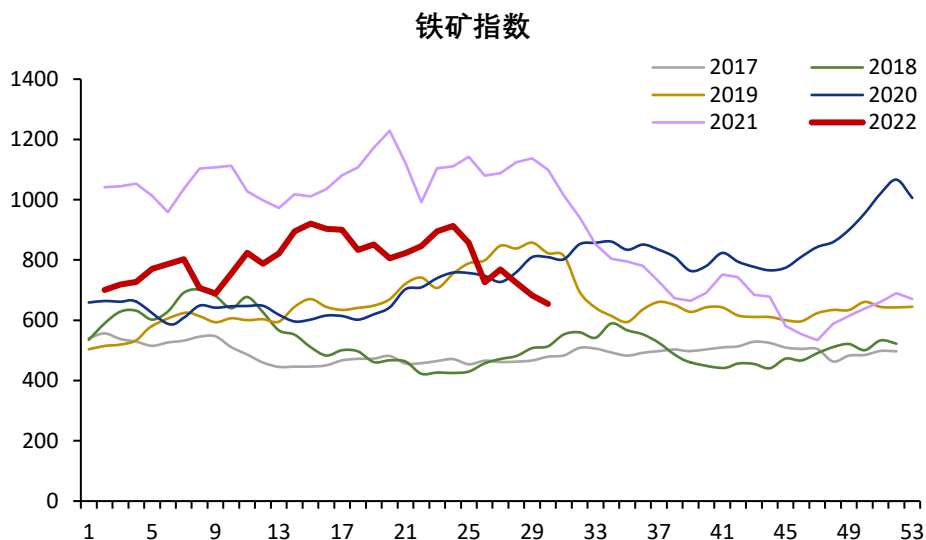


富宝257家废钢基地库存 (万吨)

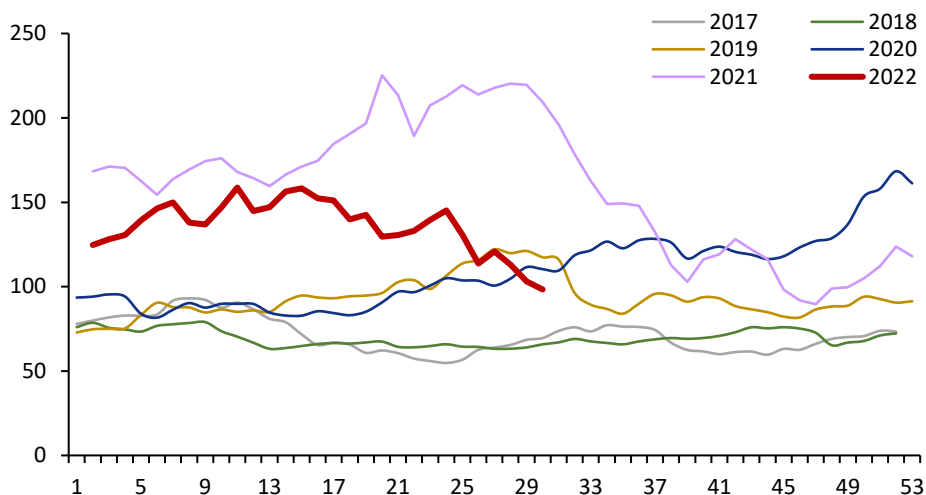


二、 价格与价差

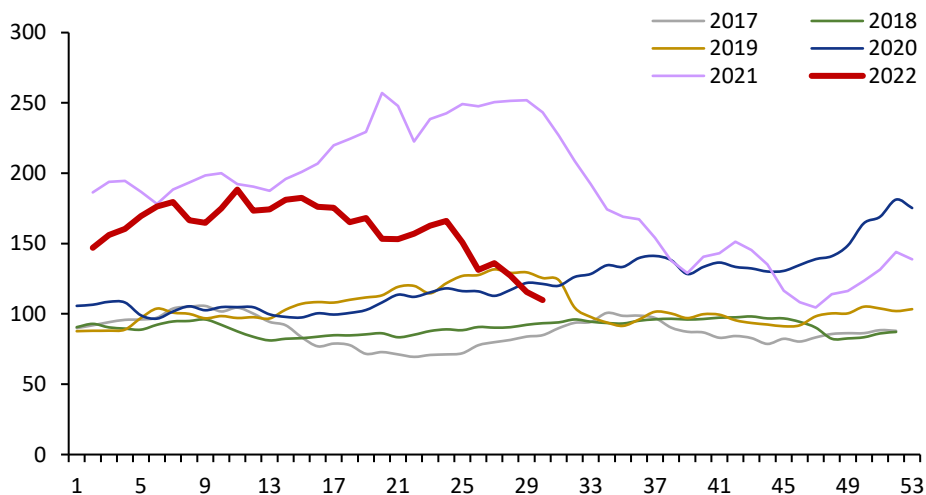
1. 价格



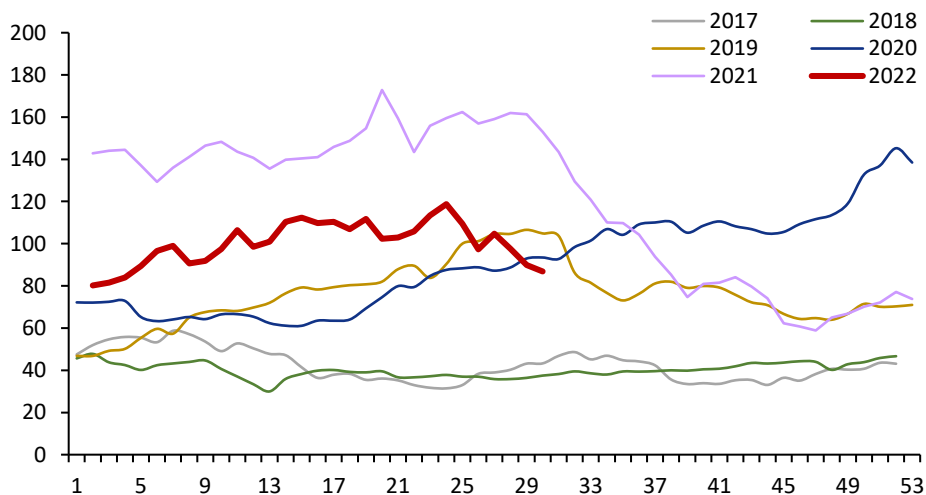
普氏指数62% (美元/干吨)



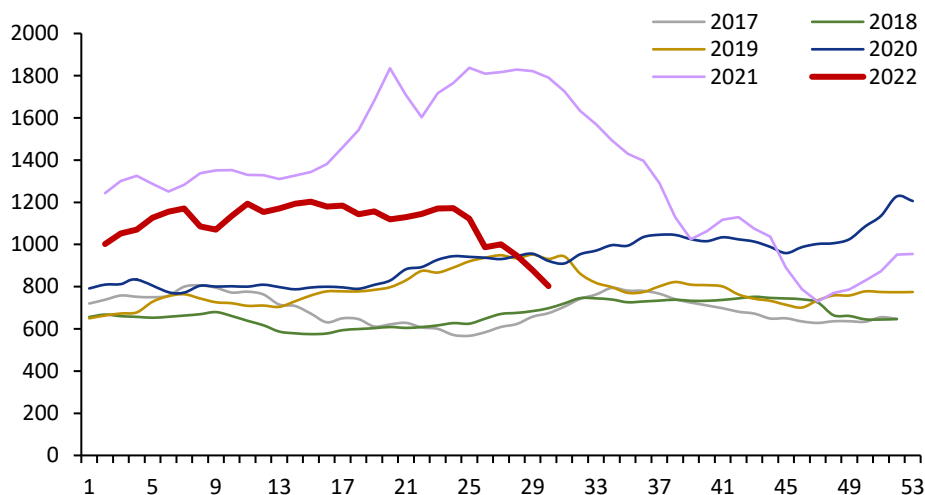
普氏指数65% (美元/干吨)



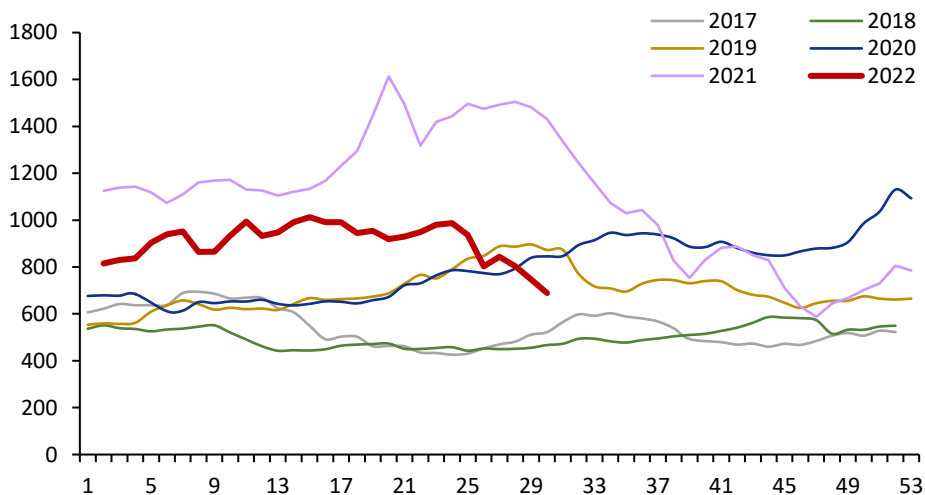
58%普氏指数 (美元/干吨)



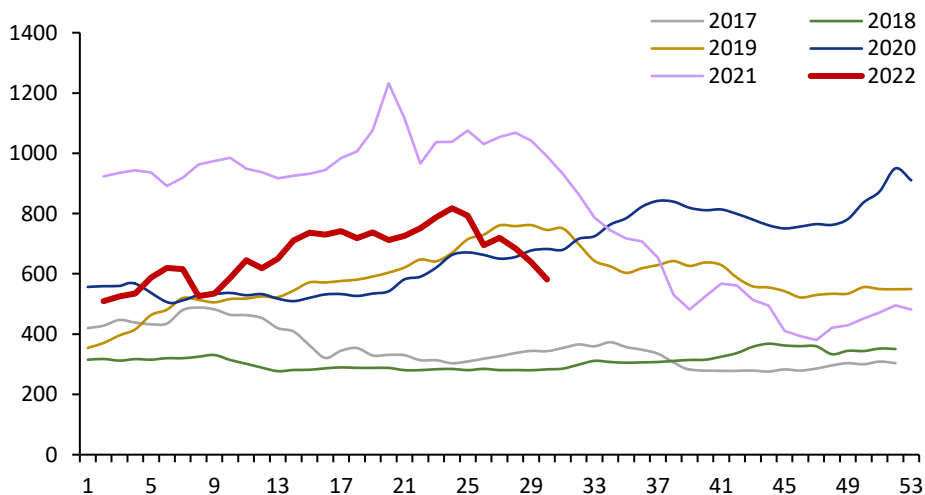
青岛港 65% 卡粉 (元/湿吨)



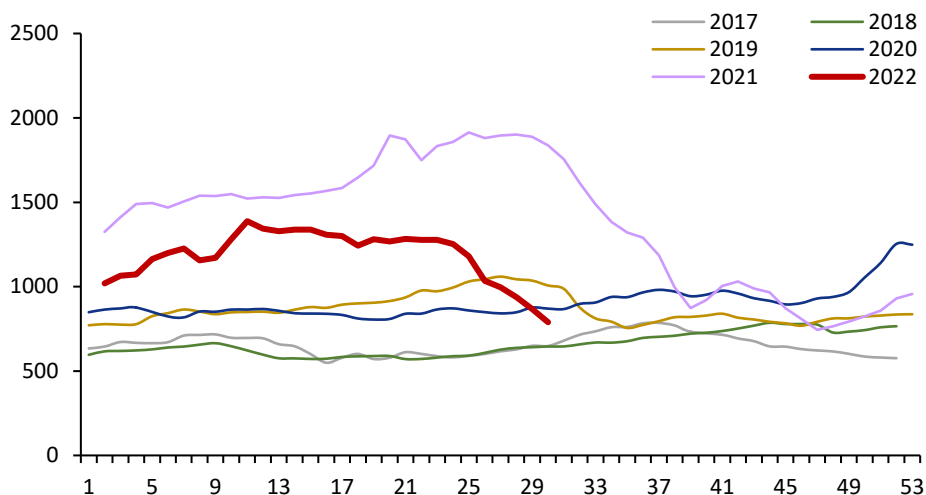
青岛港 61.5% PB粉 (元/湿吨)



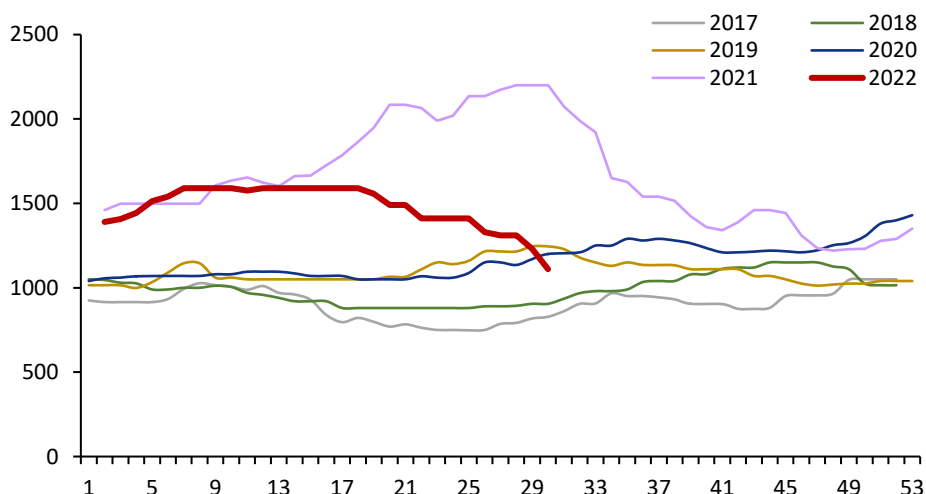
青岛港 56.5% 超特粉 (元/湿吨)



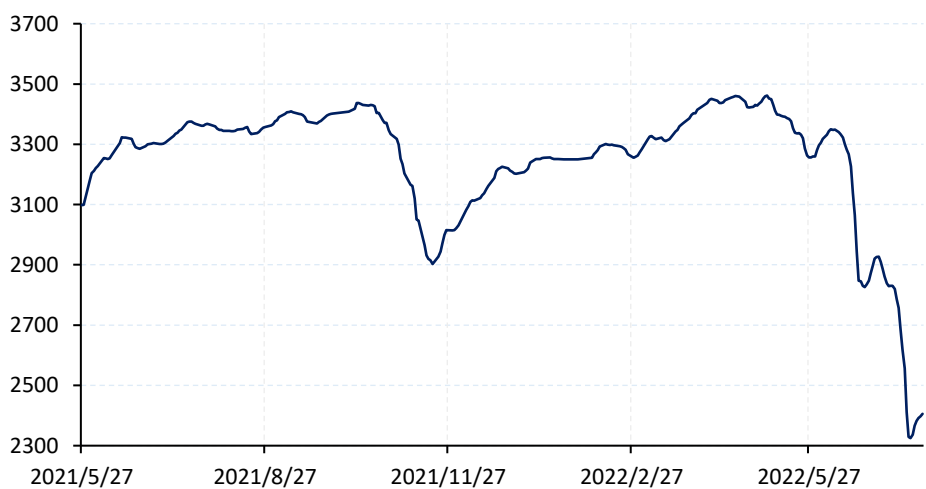
青岛港 62.5% PB块 (元/湿吨)



沂水 62% 球团矿 (元/吨)

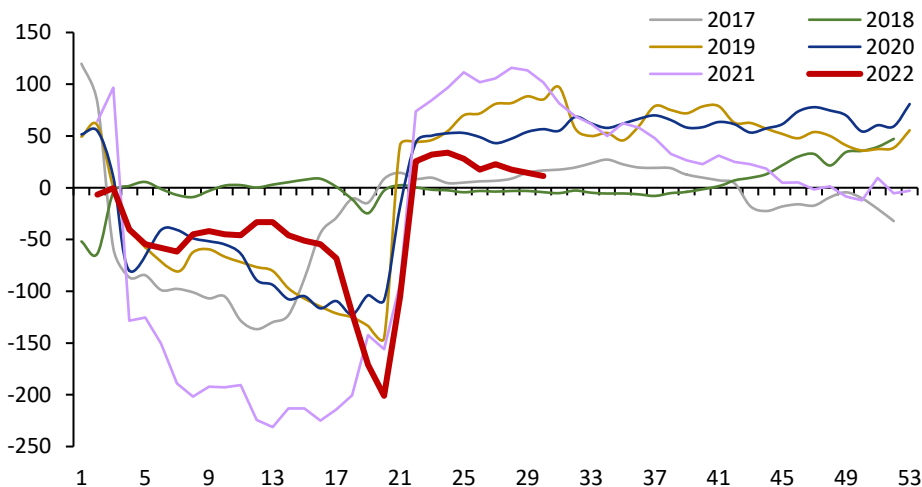


富宝废钢全国价格指数

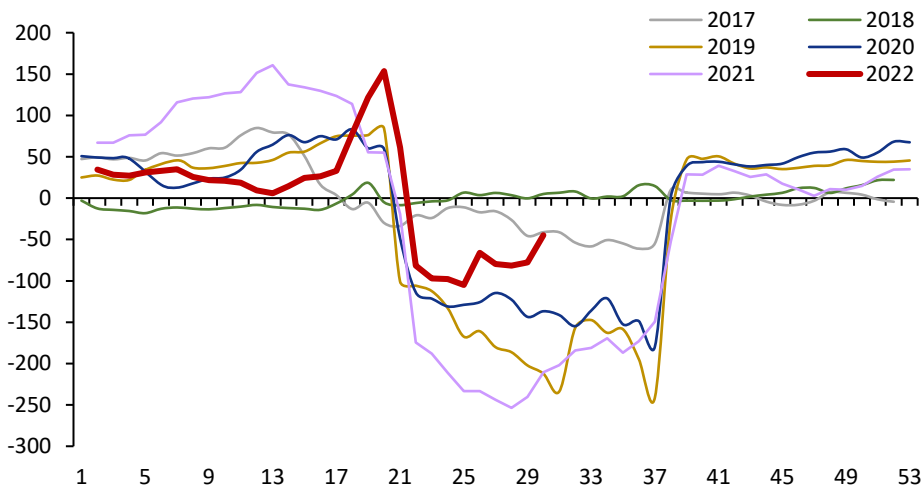


2. 利润

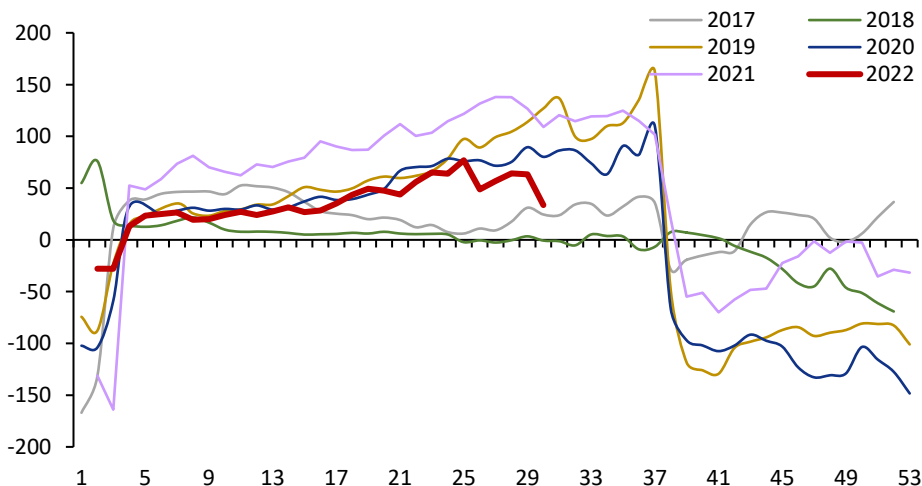
铁矿1-5价差



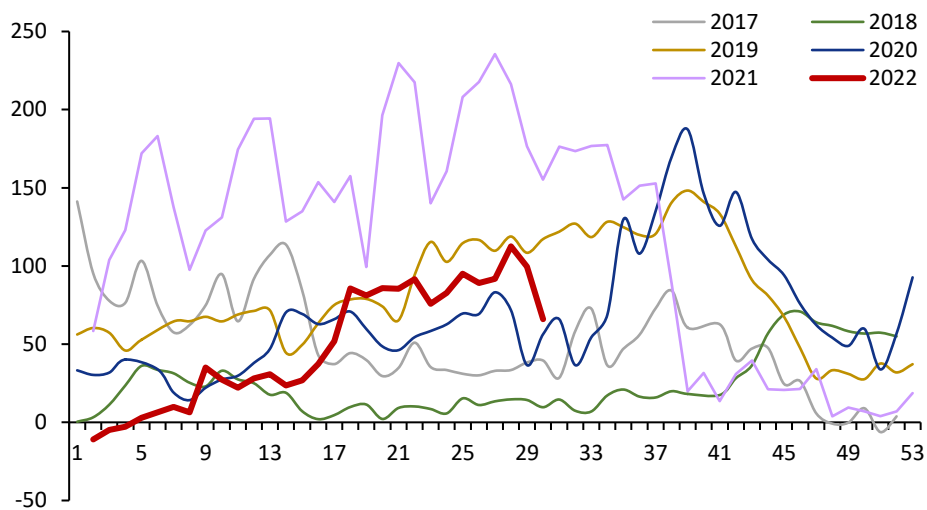
铁矿5-9价差



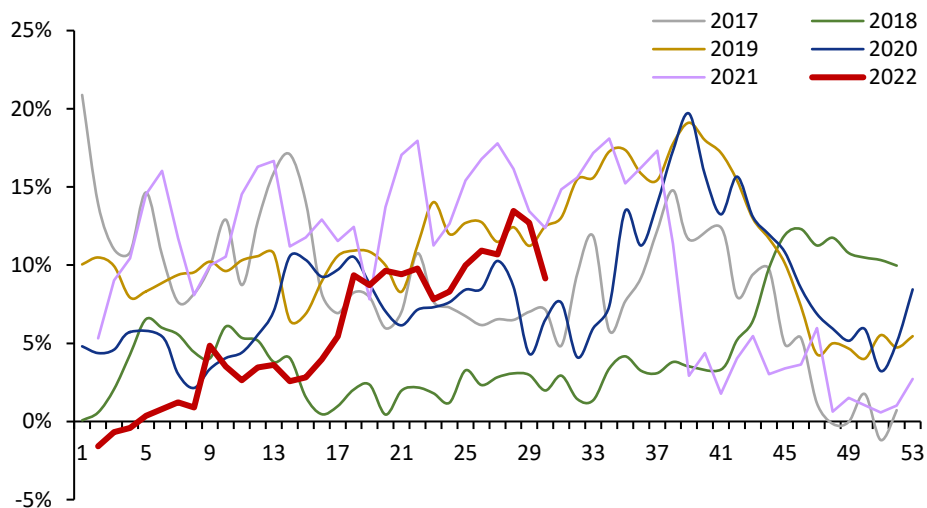
铁矿9-1价差



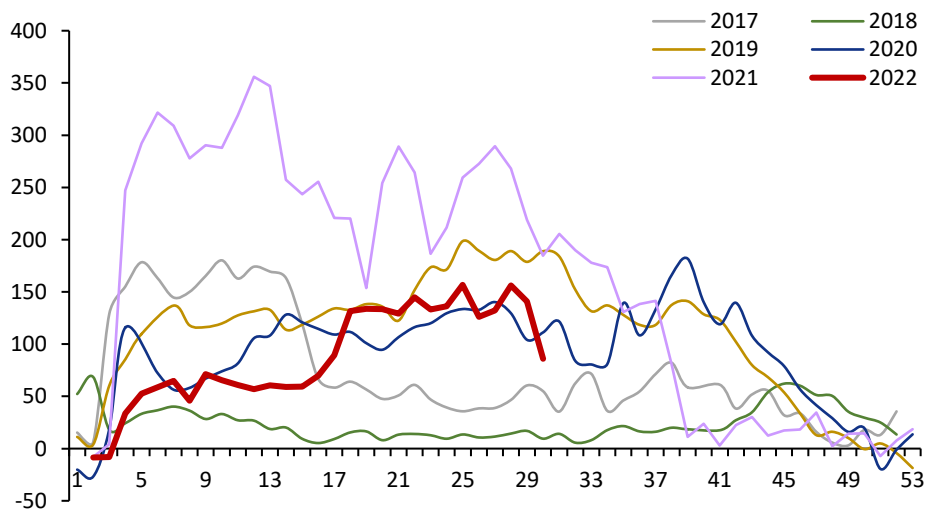
铁矿指数基差



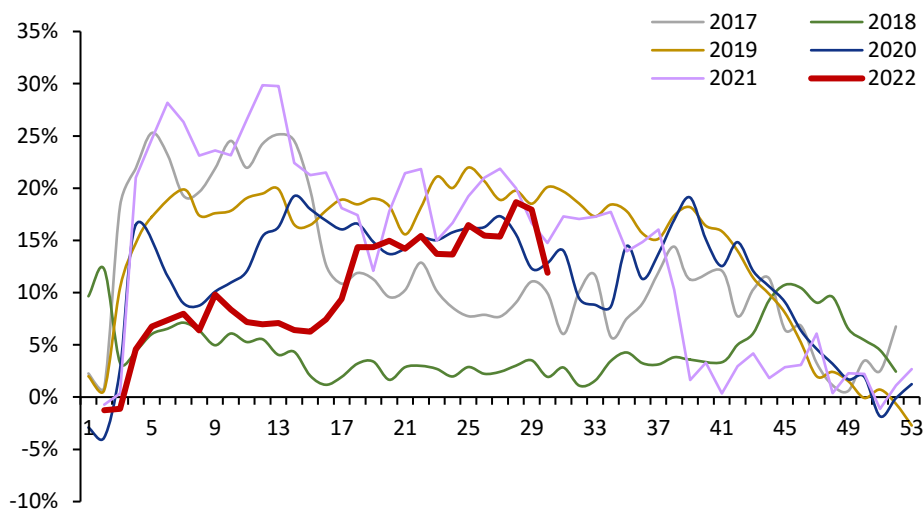
铁矿指数基差率



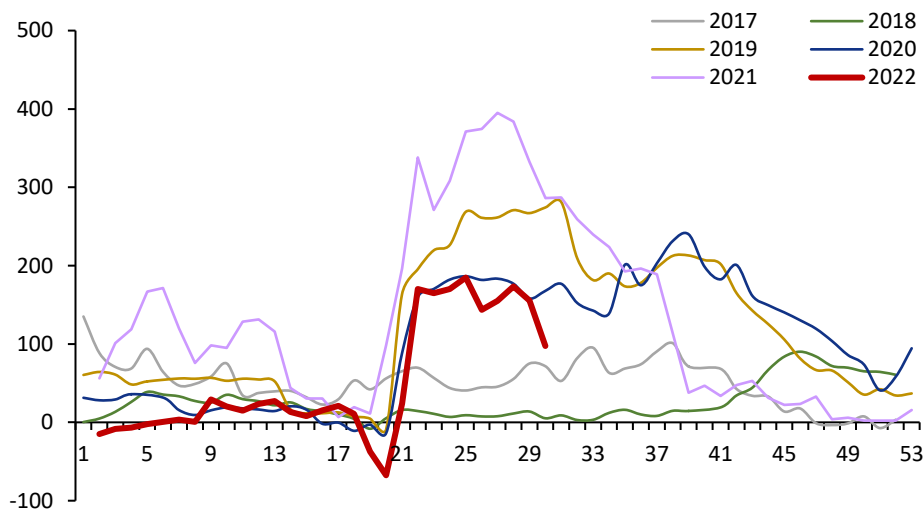
铁矿01合约基差



铁矿01合约基差率



铁矿05合约基差



铁矿05合约基差率

